

The Galleywood Heritage Centre is in the refurbished 1920s building, the only remains of the Galleywood race course's northern grandstand, situated in the middle of The Common, which was designated a Local Nature Reserve in 1993.

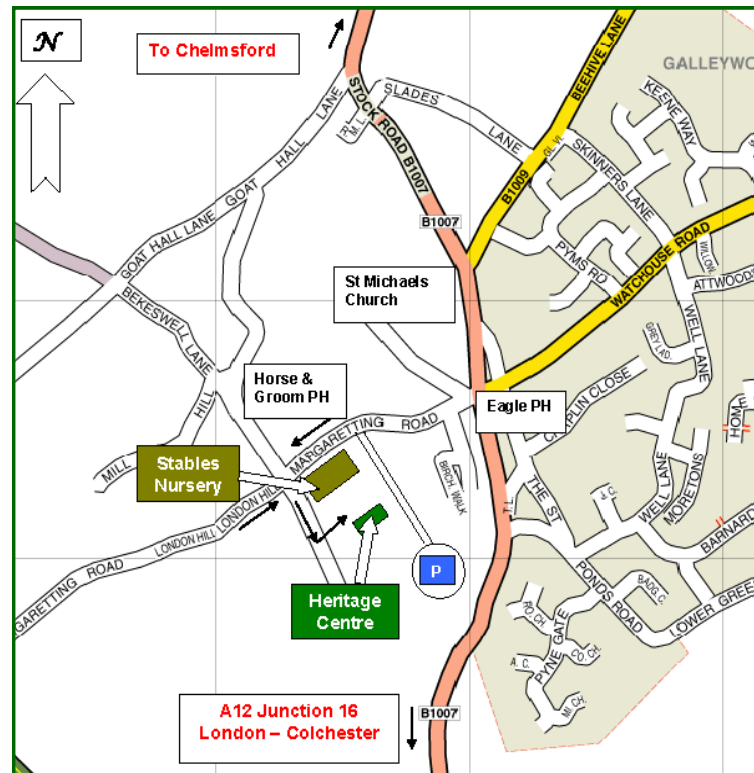
The Centre is available for hire and also stages exhibitions of both historical and natural heritage interest, with facilities for research and continued learning. There is provision for the display of historical artefacts and archives, and also for use as a meeting place for local organisations. It also caters for those with more active interests, such as walking groups, kite flyers, cyclists, and for a range of other community activities.

The Centre provides the opportunity to learn more about local flora and fauna of the Common and the surrounding areas and its associated history, such as the Race Course, The remains of Napoleonic defensive earth works, a brick works and the original Chelmsford nine hole golf course.

The Horseshoe Tea Room, managed by the Friends of Galleywood Heritage Centre, provides light refreshments - see local notices for opening times.

Vehicular access to the Centre is off Margaretting Road; the turning by the Stables Nursery.

Please request a copy of the conditions of hire, from Galleywood Heritage Centre or visit:-  
[www.galleywoodheritagecentre.org.uk](http://www.galleywoodheritagecentre.org.uk)



A car park at the rear of the Centre can accommodate over 45 cars. Two disabled car parking spaces and cycle stands for ten cycles are also provided. Additional parking is available on Galleywood Common, in the Main Car Park, with access to the Centre via a pedestrian gate and a gently inclined hard surfaced pathway.



All rooms for hire at the Centre are fully accessible by wheelchair.

April 2011

# Galleywood Heritage Centre

(Registered Charity No 1128416)

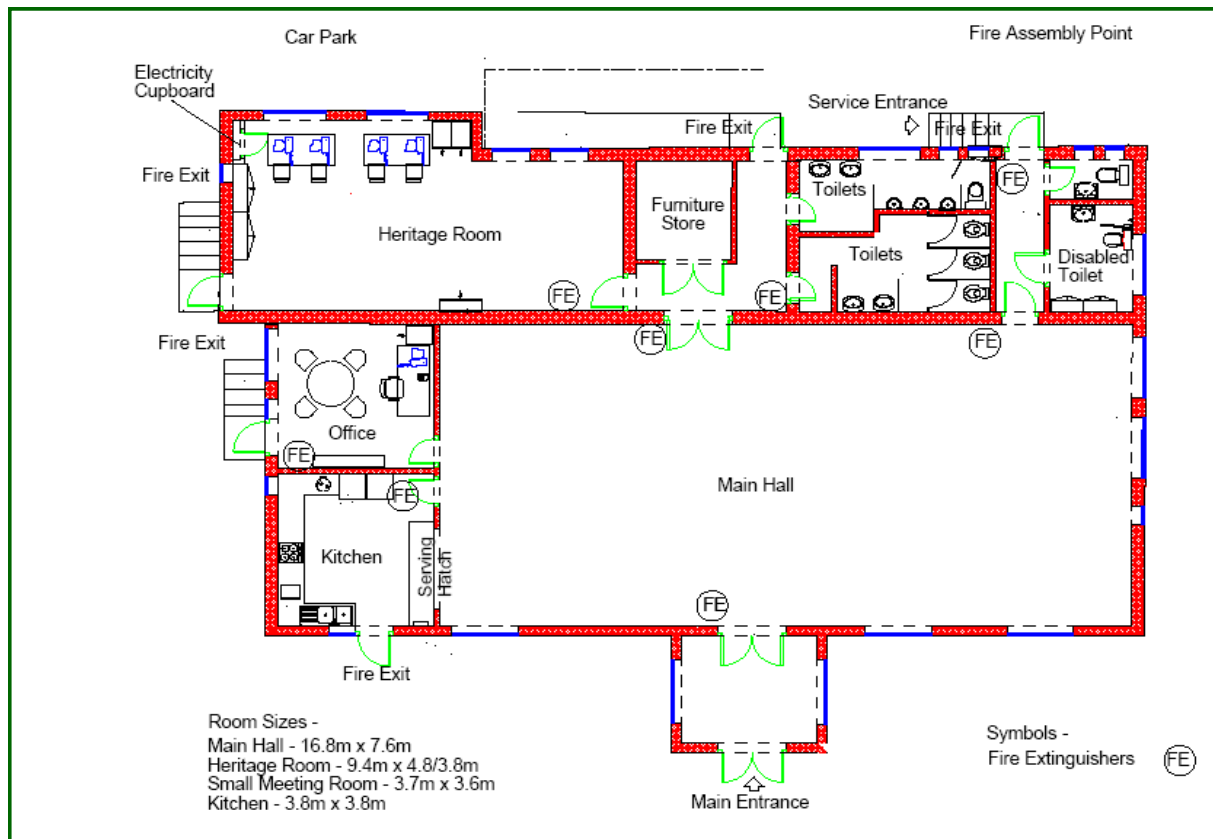


The Centre provides accommodation for a variety of functions, including Family Events, Club Meetings, Committee Meetings, AGMs, Exhibitions, Trade Shows and Seminars. Facilities are available for the study and private research of Galleywood's rich history, its collected archives and for the appreciation of the natural history of Galleywood Common and its environs, together with an IT suite.

Please contact us at: -

**Galleywood Heritage Centre**  
**Off Margaretting Road**  
**The Common**  
**Galleywood**  
**Chelmsford CM2 8TR**

☎ 01245 357700 (9.00am to 1.00pm Mon-Fri)  
✉ [mail@galleywoodheritagecentre.org.uk](mailto:mail@galleywoodheritagecentre.org.uk)  
🌐 [www.galleywoodheritagecentre.org.uk](http://www.galleywoodheritagecentre.org.uk)



**The Main Hall - 16.8m x 7.6m**  
 Bi-fold servery doors to adjacent kitchen  
 Seating for up to 120 persons or  
 banquet space up to 96 persons  
 Mobile presentation unit with PA available



**The Heritage Room - 9.4m x 4.8/3.8m**  
 4 seat IT suite with space for folding tables  
 and seating for up to 30 persons.

The flooring throughout the building is industrial quality vinyl, with black PVC up-stands for ease of cleaning. All windows are furnished with vertical blinds, for effective control of both light and privacy, with curtains in the Main Hall, with electric convector heating throughout and boost heating via high level IR units in the Main Hall and Heritage Room. Please ask for a copy of the Standard Conditions of Hire, current Table of Fees and/or arrange a booking by phoning the Centre between 9.00am - 1.00pm Mondays to Fridays.

☎ **01245 357700**  
 ✉ **mail@galleywoodheritagecentre.org.uk**  
 🌐 **www.galleywoodheritagecentre.org.uk**



**The Kitchen - 3.8m x 3.8m**  
 Equipment includes all electric range cooker,  
 with 5 ceramic hobs, water boiler, fridge,  
 microwave, toaster, sandwich maker,  
 crockery and cutlery for up to 96 persons.