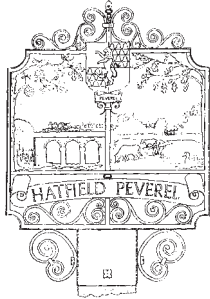


Hatfield Peverel

Review

235 June 2013





Local events and happenings round and about

Hatfield Peverel Review

Hatfield Peverel Parish Council publication. Opinions expressed are not necessarily those of the Council.

The editors are Jackie and Ken Earney. Contributions to 59 Willow Crescent, by email to kenearney@hotmail.com or by phoning 01245 381235.

Contents

Editorial/Beating the Bounds/RBL	3
Allotment history/Horticultural Society	4
Art group/Marie Curie tea party/	5
News from the Library	
Parish Council	6
Nursery news and illustrations	7
St Andrew's Church	8
Mother's Union/Methodist Church	9
New premises for Football Club	10
Bowls Club/Table Tennis Club	11
1st Hatfield Peverel Scout Group	12
Village quiz night	13
Hadfelda WI/WEA/Midsummer Music	14
Salvation Army walkathon/Wine Club	15
Community Policing team	16
Infant School/Essex Air Ambulance	17
Helen Rollason/Coach tour operator award/Walkers/Songs for Summer	18
Telephone numbers/Councillors/	19
Village hall dates	
Party in the Park 2013/Editorial team at the palace	20

Copy for the August issue by Friday 19th July please.

Diary Dates

June

- 20 Folk Dance Club
- 22/23 Art Group's exhibition, page 5
- 22 Salvation Army coffee morning
- 22 Scout & Guide barbeque, page 12
- 22 Midsummer Music at St Andrews
- 26 Hadfelda WI
- 29 Best allotment/drinks and nibbles 11am

July

- 1 Parish Council meeting, village hall
- 2 Wheatsheaf pub quiz for Helen Rollason
- 3 Flower Club
- 4 Folk Dance Club
- 4 Hadfelda Choir Songs for Summer, page 18
- 6 St Andrew's coffee morning
- 10 Tea party Marie Curie Cancer Care, page 5
- 10 Wine Club
- 13 Methodist Church coffee morning
- 13 Party in the Park 2013, back cover
- 16 WEA visit to Marks Hall, page 14
- 18 Folk Dance Club
- 20 Helen Rollason coffee morning
- 24 Hadfelda WI
- 27 Salvation Army coffee morning
- 28 Horticultural Society visit Myddleton House

August

- 3 St Andrew's coffee morning
- 5 Parish Council meeting
- 10 Methodist Church coffee morning

Front cover - David Bebb welcoming walker Andy Peddle when he arrived at the Salvation Army in Maldon Road early in May after having walked 7,900 miles visiting every Salvation Army centre in England, Scotland, Wales and Northern Ireland. He is raising funds for the Army's care of those rescued from human trafficking

It's been a busy few months ...

Firstly thank you all from us both - the editorial team - for your best wishes for all that has been happening to us recently. We dressed ourselves up in our best bibs and tuckers in March to go to Ingatestone Hall where I was presented with my BEM by Lord Petrie. There were twelve medallists in total, coming from all walks of life, and I felt really proud to be one of them. On 30th May it was Buckingham Palace, dressed up again but with a splendid hat (borrowed from a friend) that was the admiration of everyone. We trained to Liverpool Street (hat in a plastic bag) and caught a taxi - the driver was pushed to get through the traffic for us to get in our queue by 3pm where our credentials were checked. (The rules said no cameras but hey, this is the age of the mobile phone and people were taking photographs like no tomorrow). Through the palace and down the steps into the beautiful gardens where dresses and hats of all shapes, colours and sizes brightened an otherwise cloudy and damp afternoon. The Queen arrived at 4 o'clock and with Prince Phillip walked across the lawn to Royal tea tent - we did see them both, the only people we recognised! Later they spoke to selected people on their way round. We joined orderly queues for refreshments - a good cup of tea and a vast assortment of savouries and cakes, small in size and easy to pop into the mouth. There are forty acres of gardens to explore - everyone was free to wander and take advantage of the beautiful grounds. Then it was time to go. Through the gates we joined the line for a taxi and, with military precision, a team of London Taxi Drivers Association folk got everyone quickly in and away. We thought about fish and chips when we got home, didn't seem right somehow!

Beating the Bounds

Ken Earney

Spring Bank Holiday Monday, an ideal day for tackling the northern half of the eighteen mile parish boundary, a glimpse of sunshine amongst the fair weather cumulus, but a cool day, the best walking weather. Nine people took part and all the planning, parking, pickup points if needed and the earlier recce walk paid off. No need to re-establish the parish boundaries for real as in past times - it was once the custom for choristers to be beaten, bumped or dunked into ponds at points throughout the walk so they would remember the spot into their old age!. But we chickened out of sticking to every quirky kink in the boundary - what was that peculiar little sawtooth opposite Whitelands all about? - the object was to have an enjoyable day's walking. All being well, I'll tackle the southern half of the boundary next year at Rogationtide.

Hatfield Peverel hosts meeting

Peter Archer, Poppy Appeal Co-ordinator

Our local RBL branch hosted a group meeting of six other branches at The Wheatsheaf when Captain Jeffrey Fowler, Royal Engineers, gave an illustrated talk on his time in the Army. An attentive audience heard about his application to Sandhurst, the training he received and his passing out parade. He did two tours of Afghanistan and gave a description of his duties and responsibilities. It was interesting to know about the climate, the conditions and working with the local people. He then took part in an active question time which followed by the vote of thanks.

Branch reports and activities were read, along with news from the National Conferences. One new Branch member was welcomed. In July we meet at Burnham on Crouch

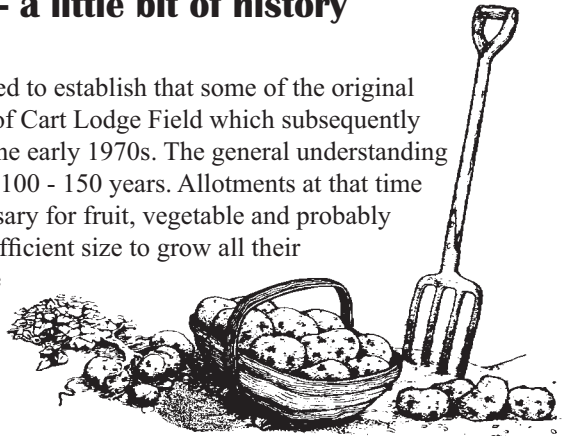


BDC Local Development Framework sub-committee - meeting at Causeway House, Braintree on Monday 17th June at 6pm. The agenda includes discussion of the Site Allocations and Development Management Plan of the two sites (HAT14 and HAT17), the subject of a public meeting in the village on the 30th January. Also on the agenda are proposals submitted by landowners/developers for sites at Nounsley, principally land between Priory Farm and 18-22 Sportsmans Lane, and the Sportsmans Arms and garden. Concern over these in Nounsley has seen local action to raise awareness and invite concerned residents to submit objections to the District Council. The deadline for submissions was the 10th June.

Hatfield Peverel allotment gardens - a little bit of history

David Goodey, Chairman HPAА (01245 380389)

Delving back through the records I have managed to establish that some of the original 'Allotment Gardens' were on a five acre area of Cart Lodge Field which subsequently became Ranulf Way and Ingelrica Avenue in the early 1970s. The general understanding is that this area has been allotment gardens for at least 100 - 150 years. Allotments at that time were considered to be leisure gardens as well as necessary for fruit, vegetable and probably chicken 'crops' for people whose gardens were of insufficient size to grow all their needs. Hence the national organisation is known as the National Society of Allotment and Leisure Gardeners (NSALG). There were other sites throughout the village, one in Nounsley, beside the footpath running from the Sportman's Arms public house to the ford, another in Stonepath Meadow, owned by a Colonel Austin, but now built on and aptly named Garden Fields. Various smaller sites, administered by the District Council, were dotted between the houses in New Road.



In 1966 the old site was sold for the later Ranulf/Ingelrica development and after much wrangling with Strutt and Parker, and the subsequent forming of the Hatfield Peverel Allotment Association, the 'new' old site was leased to the 'evicted' plot holders. This site of about three and a quarter acres remains on Cart Lodge Field between the Church and Ingelrica Avenue. This site soon filled and in 1976 the Parish Council entered into negotiations with Strutt and Parker for a further two acres of land behind the Scout HQ in Church Road next to the cricket ground. This area, now designated as the new site, opened for business in May 1977.

Hatfield Peverel Allotment Association was born in 1966 and chaired successfully by Stan Bloomfield in 1966, Wilf Curtis 1967 - 68, Jim Rule 1969 - 1974, Leslie King 1975 - 1986, Alan Ingram 1986 - 2000, Ian Goldsmith 2000 - 2009 and myself, David Goodey, from 2009 to the present day.

As recently as 2000 the old site was in a parlous state covered in brambles and home to just ten plot holders. However, from the mid 2000s the interest in allotment gardening grew dramatically and we developed to full capacity by 2011. In 2013 we now have some 130 plot holders and enjoy the natural instinct of growing our own fruit, vegetables and flowers.

Should anyone be able to provide further historical information or wish to rent an allotment please contact us through our web site www.hpaа.org.uk

Successful plant sale

Horticultural Society - Sarah Barker

Spring plant sale

A change of venue for the annual spring plant sale to Tudor Lodge, The Street. Although the usual venue for the September sale, it was interesting to see the structure of the garden and how different it looked in the Spring sunshine - not the rain as forecast! There was a wide variety of plants on sale and buyers went home with their bags of new specimens - including pelargoniums for the

Autumn Show competition, and potatoes for the September competition. The cakes were delicious as always and the morning raised £393 for funds.

Day trip to Myddleton House and Capel Manor

Sunday 28th July

Home of celebrated self taught gardener, artist, author and philanthropist Edward Bowles.

Horticultural college with extensive grounds. Coach travel/admission £15.

Tickets/information from Clive
01245 381704



Two-day event for annual exhibition

Hatfield Peverel Art Group - Peter Walker

The group has resumed weekly Monday meetings in St Andrews Church Hall in the more agreeable springtime conditions, and with the continued regular input of tutor Trevor Harwood. The group is preparing for the **annual exhibition, which will take place on Saturday 22nd and Sunday 23rd June**, in the village hall. The new venue for this years' two-day event will provide additional opportunities for special attractions additional to the well-established format of the exhibition itself. These will include a painting demonstration and children's workshop, a raffle, and a novelty auction, with the usual high-quality refreshments available at reasonable prices for the enjoyment of all. The exhibition will comprise works by both Art Group members and non-members, and the majority of exhibits will be available for sale. Also included in the exhibition will be a display of work by pupils from the local school.

The exhibition is open to all visitors from 10am to 6pm (Saturday) and 5pm (Sunday), with parking at the village hall. Entry is free, catalogues available at the door for a nominal charge.

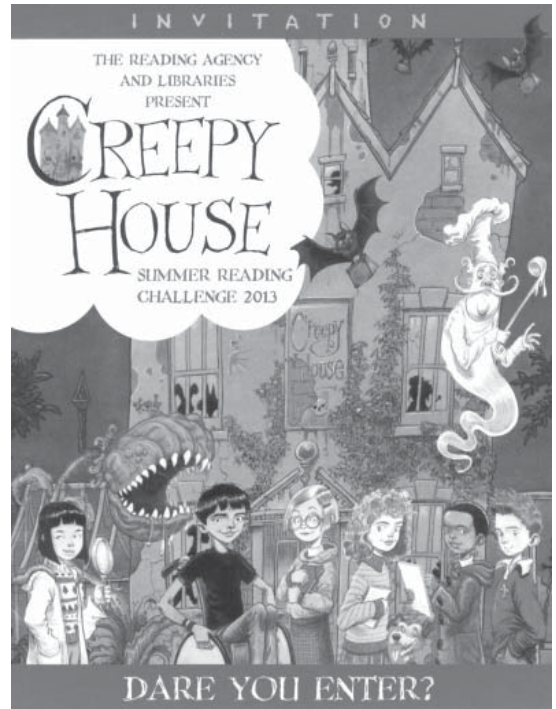
The Art Group holds its weekly meetings on **Monday afternoons from 2pm to 4pm in St Andrews Church hall**, and should you wish to join or find out more about the activities of the group, please contact Peter Walker on 01245 381798, visit the website at www.hatfieldpeverelartgroup.co.uk or come and see us during one of our Monday sessions. You will be warmly welcomed!

Come to a blooming great tea party...

I will be holding the third tea party for Marie Curie Cancer Care at 35 New Road on Wednesday 10th July from 2 to 4pm. Tea and home made cakes £2.50, raffle and bring and buy. Everyone welcome. Last year we raised £540.

Information from Wendy Doe, 01245 381276.

Congratulations on your British Empire Medal, a great honour, well deserved.



Join the Library's Creepy House summer reading challenge

Saturday 20 July - Monday 2 September

Children - spine-chilling surprises wait for you in the Summer Reading Challenge, come and pick up a Creepy House folder and choose some exciting stories. Activities are free and you can join any time during the summer holidays. Unlock the secrets of the house by reading six books and collect stickers, certificates and medals, or take part in Mystery Street. Call in or ring 380 988 during library opening times below.

Tuesday 1 - 5pm

Wednesday 9am - 1pm

Thursday 1 - 5pm

Saturday 9am - 1pm

Book Talk groups

Chapter 2 - 1.30pm second Tuesday of month

Chapter 4 - 1.30pm fourth Tuesday of month

Bookstart Week - 24th - 30th June

Children, come in and listen to Storytime and collect your handouts.

Parish Council news

Lisa Miller, Clerk to the Parish Council

36 Rossendale, Chelmsford, Essex CM1 2UA Tel 01245 344439

clerk.hatfieldpeverelpc@blueyonder.co.uk

Please call the above number to make an appointment with the Clerk at the Parish Office



Planning

All planning meetings are open to the public, notification of which will be erected in the village notice boards three clear days prior to each meeting.

The following applications have recently been made

Erection of two rear single storey extensions, addition of windows at rear and replacement side dormer at Crofton, Station Road; erection of two storey side extension, replacement windows on front elevation and replacement porch at Oaklands, Nounsley Road; erection of dwelling at land off Mowden Hall Lane; erection of timber clad barn farm shop at Bovingtons Farm, Maldon Road.

The following applications have been approved by the District Council

Demolition of existing outbuildings and erection of single storey 3 bay carriage house at 1 Station View; erection of potato cold storage building at Whitelands, Terling Road; change of use of land from highway maintenance depot to ancillary car park for D's Diner with associated hard surfacing, landscaping and fencing at Wayside Cafe; erection of single storey rear extension at 3 Lawrence Court; demolition of existing conservatory and erection of two storey side extension at Shambles, Nounsley Road; erection of additional storey to create three self contained flats, proposed demolition of existing garage block and the construction of a new detached carport block, additional parking and storage facilities at Priory Court, The Street; replacement of two interior doors with high quality oak faced doors at Vinehurst, The Street.

The following applications have been refused by the District Council

Erection of farm shop at Bovingtons Farm, Maldon Road.

Tree Preservation Order granted - tree work at Granville House, Ulting Road.

No Stopping notice

There is new lining outside the school. **Parents are reminded not to stop to drop off or collect children during the restricted times** as this causes a danger to pedestrians and drivers trying to pass on a bend.

Local Development Framework (LDF)

Five new sites were put forward for consideration by the Parish Council. The issues are to be discussed by LDF Sub-Committee of Braintree District Council at Causeway House on Monday 17th June at 6pm. *(See page 3 about landowner/developer proposals for sites at Nounsley also to be discussed, and also http://www.braintree.gov.uk/meetings/meeting/485/local_development_framework_sub-committee)*

Party in the Park 2013

Plans are coming together for the Party in the Park on Saturday 13th July. Please see the separate article in the Review on the back page, and look out for the programme of events which will be available shortly.

Football pavilion

The football club will soon be vacating the pavilion on the recreation ground, after many years. A working party has been formed to implement the future of the pavilion - if you have any ideas or comments then please do get in touch with any member of the Parish Council or come along to the council meetings.

Hadfelda Square car park - there are now **no weekend parking restrictions on Saturdays/Sundays.**

Council meetings, village hall 7.30pm, Mondays on 1st July, 5th August, 2nd September.



Amber Likes to paint.

Next steps for the nursery children

This term at nursery and pre-school is focused on transition. In pre-school we are preparing our children for their next step of their learning journey into 'big school'. We are very lucky being on the same site as the school enabling the children to become familiar with their environment.

Evan Likes to play on the computer.



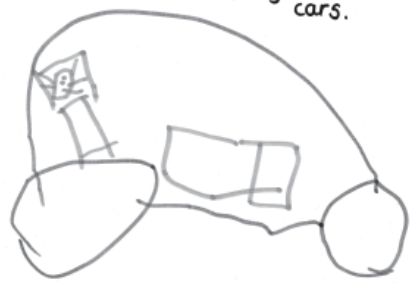
JAKE

The nursery children will also be starting visiting pre-school to build their confidence. It is a special time where we are trying to make the most of the time we have left with our school leavers. We would like to thank all our children and parents for their participation in nursery life and wish them lots of luck for the future.



Jake Likes to play in the office.

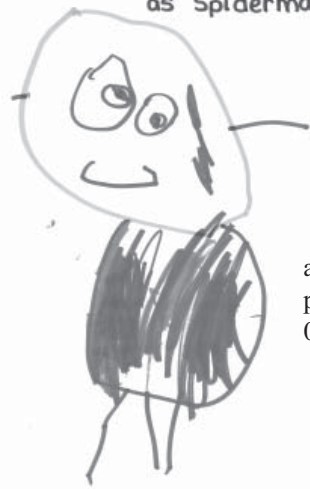
James Likes to play with the cars.



Our open day is on Saturday 15th June 10am - 11.30am. If you are interested in our provision please come and see us.

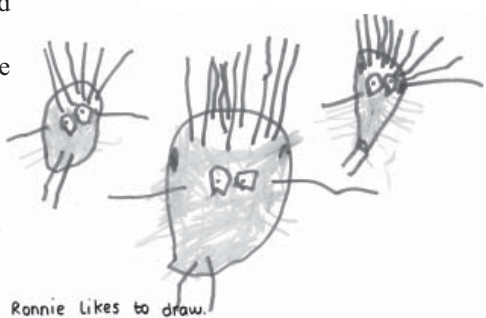
The children have drawn some pictures about what they enjoy doing at our nursery

Oliver Likes to dress up as Spiderman.



The nursery is managed by Belinda Wakelin who has a BA degree in Early Years and holds Early Years Professional Status, with a well qualified staff team. As well as the nursery we run sessions before and after school for children up to the age of eight years old. For availability of spaces please telephone 01245 382450.

William Likes to play with the trains.



Ronnie Likes to draw.

News from St Andrews

At last! Spring has sprung, just in time for summer! Writing under natural light for a change, with brilliant sunshine and temperatures creeping up. Can I consign my jumpers to the chest of drawers for a few months? I have tried this twice already! The nights can still feel chilly. Pommery is not moulting, he's taking no chances although outside a lot, drawn by the warmth and the sun, not to mention organically grown food in the form of rabbits. He's too old to catch them, but he likes to watch them and dream of past glories.



Cold or warm, the grass in the churchyard and Vicarage has really got going and to the casual observer it might look as if we are hay-making. Thanks to our dedicated team who look after it so well and for Gretta Clarke who supplies tea and most of the biscuits to re-energize us.

We are now past Pentecost and well into the Trinity season. This year we are following Year C readings which are largely St Luke. This is probably my favourite gospel. It also has more women in it than any of the others. Gospel women are a fascinating, if somewhat neglected subject and following on from the Lent Course, a post-Lent group is looking at some more of these on Monday evenings.

It seems a long time since Holy Week and Easter and a number of things have been happening. We have a new Parochial Church Council with some new members on it. Pentecost was celebrated with a special service led by Mary Daw, our Reader, called 'Perfect Seven'. Coffee mornings continue to be popular on the first Saturday of the month. Though it is our intention to raise funds to keep the church going, it is even more satisfying to see lots of old friends and to make new ones. Luncheon Club and Soup and Sandwich continue and may I thank everyone who makes these events the cheerful occasions that they are.

Very recently a new word entered our vocabulary; the word 'corbel!' Though it has an almost rude sound to it (I leave you to work that one out) they are actually pieces of masonry that hold up the wooden arches that support the roof in the nave of St Andrews. Two of our corbels had cracks in them and we had to put tape around the affected areas in case they fell. One was above the pulpit so if I had preached an American tele-evangelist tub-thumping sermon, that might have been my last one!

Harvest for the Hungry – because of increasing transport costs, this initiative has ceased in its present form. Instead of food the charity is collecting money to create homes and to give help and support for those coming out of institutions. If you wish to contribute, please give money donations to Mary Daw or the Vicar.

Witham Area Foodbank. A box has been placed in church and a list produced which is basically asking for tinned goods, cereals, rice and pasta. More information can be found in the Parish Magazine.

St Andrews and All Saints website – in common with many other churches we are going to have a website giving information about the church and its activities. What we need is a website manager, someone who can keep the site up-to-date. If you think you could perform this vital function, please contact the Vicar. It is essential that we have someone to keep it up-to-date.

Dates for your diary

Saturday July 6th coffee morning 10am to 12 noon in the Church Hall. Cakes, coffee, nearly new stall, books, raffle. Everyone welcome.

Sunday July 14th at 10.15am – Outdoor All-Age Service - as is our custom, this will be held in the Vicarage garden (weather permitting). Everyone welcome; please put in your diary NOW.

Please pray for: the residents of New Road, Nounsley Road, Nursery Drive, Old School Road, Orchard Close, Peverel Avenue, The Pines, Priory Close, Priory Farm Road, Priory Mews, Prospect Close.

'The seeds we sow help us grow'

Mother's Union



Speaker at the May meeting was Canon Eileen French whose talk was entitled 'The seeds we sow help us grow'. She explained that at the beginning of each year MU speakers get together to work on a theme for the coming twelve months to take to all branches countrywide so everyone is aiming for the same thing. This year they began with a picture of a tree; it needs strong roots to help it grow and lots of branches to help it flourish. We were given two lists: the first asked the question 'What makes a good branch?' and we were asked to pick five items we thought were the most important to us. Among our choices were commitment, fellowship, prayers, interesting speakers, but we also thought being part of a world-wide organisation was very important.

The second list asked us to pick out five 'Help us to grow' ideas: we felt gratified to see that many on the list were already in place in our Church - coffee mornings, Edward Bear Club, Parish magazine, Families First magazine, Home Visiting team. These are active groups and several members are involved in each of them. We thought that making invitations personal was important and that a strawberry tea in the Vicarage garden was a delicious idea (if the weather ever gets warm enough!)

We enjoyed our afternoon's exercise and thanked Canon Eileen for her interesting talk.

The Methodist Church in Hatfield Peverel - 138 years

Our Easter day service on 31st March was led by Rev Jean Dane when we remembered that after the grief in the death of Christ, his disciples were then amazed in the realisation of his resurrection on Easter Day. A happy occasion followed our Sunday service when Dionne brought her son, Theodore, to the Church to be baptised by our Minister, Rev Sue. The Church was full to bursting with Dionne's family and friends and Theodore smiled as he was blessed with water and then presented to us as we witnessed this special occasion.

The 50 days between Easter Sunday and Pentecost offer us time to learn to live a Christian life in the light of the resurrection and to ask for empowerment through the Spirit. Our local preacher, Val Carter, who took one of our services in April, illustrated the growth of our Christian faith by using the process of bread making following in the success of 'British Bake Off' programme. She compared the process of making bread by mixing the ingredients, adding the yeast, proving, knocking back, proving again and finally baking to our Christian journey. She reminded us that our faith may grow slowly or in great leaps forward, may take some knocks and may be a slow process but can produce a good life which speaks of love, hope and faith. We were rewarded on the day with home-made Chelsea buns, a mixture made in heaven!

On 12th May we celebrated 138 years of Methodist worship at our Church in a service led by Rev Graham Cocking who has recently moved into this area. His message 'Stocks and Bonds' referred not to the financial instruments which can concern and worry us but the chains which held Silas and Paul when they were imprisoned and beaten by the Romans after they converted to Christianity. The prison was shaken by a violent earthquake but the disciples controlled the prisoners to save the fate of the jailor. The jailor was so grateful that he and his family immediately converted to Christianity. We remembered how Methodism had been introduced to this village all those years ago and how Christianity continues to be experienced in our Church today.

Regular events

Every Sunday	11am	Morning Service - everyone welcome
Every Thursday	10am - 12	Open Door - come and join us for tea/coffee and friendly chat
2nd Saturday in month	10am - 12	Coffee morning and cake stall
1st Monday in month	7.30pm	House Group

New premises for HPFC

Vice Chairman, Aaron Hayden - 07758 008538

hayden_a@sky.com

Vice Chairman, Jim Isaacs - 07736 437831

jim.isaacs@sky.co.uk

Website: www.pitchero.com/clubs/hatfieldpeverelfc



We are delighted to announce that after many years of effort and the expenditure of gallons of blood, sweat and tears the building of our new clubhouse and changing rooms has finally commenced. The first spade was put in the ground in March and as you read this update the first changing room unit will have been placed on site, with the clubhouse unit nearly complete in the factory. We hope to have the facility up and running in time for **Thompson Day – 29th June 2013**, to be followed in due course by a grand opening.

We cannot praise highly enough the members of our New Venture Committee who have overcome the numerous hurdles - including last minute legal headaches that threatened to scupper the project. The teamwork, commitment and passion shown by these individuals cannot be overstated and the club will be forever in their debt for making this project happen.

We would also like to acknowledge the huge efforts of our architect Ron Hayden who has been the driving force behind the project. Unfortunately, Ron has had to withdraw from the project due to personal issues but we look forward to welcoming and thanking him personally at our grand opening. The project will be seen through to its conclusion by the New Venture Committee.

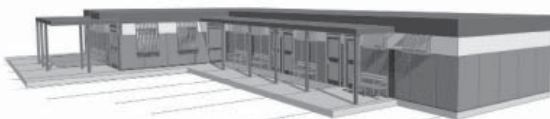
The fund-raising efforts of the whole club should also not be underestimated. In the last five years we have raised over £50,000 through our own fund raising and another £300,000 in grants. We are not quite there as we still need to pay for the kitchen and bar fit-out as well as our landscaping scheme (a planning requirement). We would like to thank Sharon and Stuart Fennell for their hard work running the tea hut. To date this has grossed over £5,000 towards the New Venture project. Also a special mention to Gareth Howard who raised over £1,500 by doing a sponsored sky dive – the monies raised were split 50/50 between the club and Helen Rollason Cancer Charity.

Finally, we would like to thank the Parish Council for its support, in particular Peter Endersby and David Broddle. Many thanks too to our neighbours in the Bowling Club for their patience and support.

Season 2012/13

As we draw to the close of another football season we can look back with a sense of pride on our achievements both on and off the field. Our ten junior teams continue to go from strength to strength with several teams winning league and cup silverware this year.

We are always looking for new players; in particular we want to build up our Reception and School Year 1 age groups. We need one or two willing volunteers to run the team but our existing coaches would be happy to help get training sessions up and running. If you have a son or daughter interested in taking part please call or visit our website.



The senior teams have both had tough seasons but we hope that the move to our new ground will inspire the players and encourage new talent to join us

Thompson Day 2013

Our annual **club tournament (running since 1972) is on Saturday, 29th June.** For the first time this will take place at our new home - Keith Bigden Memorial Ground, Wickham Bishops Road, followed in the evening by our end of season presentation hosted for this year at Witham Town Football Club.

Further club news, updates on Thompson Day 2013, the 'New Venture and full details of fund-raising activities and events can be found on our club website: www.pitchero.com/clubs/hatfieldpeverelfc/

Sunny weather - but not for long!

Bob Gammie, President (381497)
www.hatfieldpeverelbowling.org

When we opened the bowling green, springlike sunny weather prevailed - but not for long. The Arctic wet and windy conditions returned, as in previous years. However, the green is playing well and several visitors have complimented us on our greenkeeping. League games and friendlies have just started and while we have won more than we have lost, it is too early to judge how the season will progress. Our internal competitions have yet to start so now would be the time to join us if you would like to take up bowls. Initial coaching can be given with woods supplied - but please wear flat soled shoes.



The short mat winter season concluded with our annual dinner excellently prepared by Roger and Daphne Hoare. Sadly Roger fell ill the night before and Daphne struggled on with back up help from Cherry Richardson and others. Presentation of trophies won throughout the year followed and it was good to see Joan Cowell there to present the trophy in memory of her late husband Jim. Our gratitude to Daphne for an excellent meal and our good wishes to Roger for a speedy recovery.

Earlier our finals night saw Derek Aspinall beat Chrissie Harris in a close game for the Peter Brazier Cup, and in the pairs, in another close game Tony Robinson and Jill Buckingham beat Chrissie Harris and Cherry Richardson for the Alan Doe Shield. Not Chrissie's night! The league was eventually won by Cherry Richardson's team ably assisted by Peggy Brown, Geoff Blackburn and Fred Brown. Sheila Dover's team was a close second. The ladies took home the Easter eggs, but lost the annual ladies v gents match on the last round.

We look forward to our strawberry tea following the Captains' versus Presidents match, at which the Sportsman's Arms bell will be tolled again by the late licensees.

Do come and join us, we are a friendly lot.

The end of the season...

Table Tennis Club - Andy Simmonds

The 2012/13 playing season has ended and our five teams in the Chelmsford League from Division 2 down to Division 5 all did well. We expect to run five teams again next season.

Of the two teams who played in the Chelmsford knock out cup competitions one team won the Division 4 Down and the other team were runners up in the Division 2 Down.

Congratulations to Guy McKenzie, handicap singles winner, and Dave Calleja who won the open singles in our internal club competitions. We have entered two teams in the Chelmsford Summer League running from June to August.

The annual club dinner in April at Russell's Restaurant in Great Baddow was well organised by Dave Carter and very enjoyable. Our club AGM took place in May.

We are always looking for new members, male or female of any standard, particularly experienced players. Late August/early September would be an excellent time to join the club and get to know us at one of our practice nights before the new season starts. Anyone wishing to re-start their playing career would be most welcome. Please call and leave contact details with either Neil Freeman on 01245 382249 or Andy Simmonds on 01245 381020 or 07932 057205



1st Hatfield Peverel Scout Group

Group Secretary: Suzanne Evans

The 1st Hatfield Peverel Scout Group was formed over 100 years ago; all units, Beavers, Cubs, Scouts and Explorers, are well subscribed and hold weekly meetings in the Scout and Guide HQ in Church Road. There is an adult support group known as the SASU who assist the group, this is open to all adults with an interest in scouting.

Beavers - as usual, the Beavers have been very busy; they have enjoyed St George's Day craft work, Horse Racing (with wooden horses), a visit from some Husky dogs, and they have all gained their Experiment activity badge. The annual Duck Race was won by Ben, with Emma as runner up.

Cubs - the Cubs made an enjoyable visit to Pets at Home in Chelmer Village to gain their Animal Carer activity badges and they have also completed their Local Knowledge activity badge, which involved a visit to St Andrews Church. A fun run, which was open to all units, including the Guide units, was held at the cricket club to raise funds for the HQ. Grateful thanks to everyone who made the evening a success.

Scouts - in March, the Scouts visited the Big Bang Exhibition held at the Excel Centre in London; afterwards everyone agreed that it was a very enjoyable day. A recent visit to the Essex Crime Scene Investigation Unit, in Little Waltham, gave the Scouts the opportunity to solve crimes using fingerprint techniques and reconstruction (*see photo right*). They all wore forensic suits, which they were able to keep as a memento of the evening.



Explorer Scouts - Explorer Scouts have been busy this term and are looking forward to camping at Gilwell and an autumn 'back to basics' camp. They have also recently welcomed a new assistant leader.

AGM - our AGM, held in May, was well attended; the guest of honour was Derek Joyce, District Commissioner (*see photo opposite page*). After the formalities, everyone enjoyed a BBQ, expertly cooked by the Explorer Scouts. Presentations were made to: Robert Gansbuehler (Beaver of the year), Alexander Strong (Bob Boyden Cub of the Year), Abel Shields (Tom Upson Most Improved Scout of the Year), Scott Griffiths (Peter Jarvis Explorer of the Year), and the Price Family (Family of the Year). Special Awards for Courage were made to Max Lenoir and Kira Jarvis.

SASU - as well as its own activities, the SASU provided valuable assistance at the AGM and the Fun Run, and will be helping at the Beaver and Cub camps. If you would like to support the youngsters and be part of an enjoyable social group, please contact Jo Oldfield on 01245 381756.

New recruits and moving on

We are pleased to welcome to the group: Chris Phillips (Group Chairperson), Michelle Spicer (Group Administrator) and Joe Evereart (Assistant Explorer Leader). **We would like to thank** Lynne Coulson (Group Administrator) and Neville Oldfield (Scout Leader) for all their hard work for the Group; sadly they now have other commitments and have decided to move on.

Tony Price will move from Assistant Scout Leader to Scout Leader and Julie Davies will move from Assistant Cub Leader to Assistant Scout Leader.

Thank you - As you all know, we have been actively fund-raising to refurbish the Scout and Guide Headquarters. However, we have also received donations from the community, which have greatly helped our cause. We would like to thank everyone who has contributed, but in particular: the Curtis Family and friends, for donations in memory of the late Walter Curtis, and Rowen Prigg for donating all her London Marathon sponsorship money. We have also received a considerable grant from Essex County Council.



Fund-raising - everyone who shops on-line can help us with our fund-raising by using the Easy Fund-raising Website. Just shop via <http://www.easyfundraising.org.uk/causes/1sthpsg> and a percentage of whatever you spend is donated to our Scout Group. **The next event is a BBQ to be held on 22nd June at the HQ.**

Monthly paper collection...first Saturday of each month

In order to raise funds, the Scout Group carries out a monthly paper collection. Please leave out your newspapers, cardboard and cereal boxes etc by 9am on the first Saturday of the month. To those who kindly drop off their own newspapers and cardboard, please be aware that, **due to repeated vandalism, the skip will now be locked between the hours of 5pm and 8am.**

Useful Contacts

Group Scout Leader: Nick Nicholas, 07841 597977, darrennicholas@btinternet.com

Group Administrator (membership enquiries): Michelle Spicer, hpscoutgroup@gmail.com

Hire of Headquarters: Irene Price, 01245 382390, tony@pricechurchroad.freemove.co.uk

Newspaper Collection Co-ordinator: Jonathan Dormon, 01245 382981, jonathan.dormon@btinternet.com

Group Secretary: Suzanne Evans, 01245 382397, boons_calibre_travel@lineone.net

Meeting times

Beavers, Monday 4pm - 5.15pm

Cubs, Friday 6.45pm - 8.15pm

Scouts, Wednesday 7.30pm - 9pm

Explorers, Thursday 7.30pm onwards

SASU (adults only), first Thursday 7.45pm onwards.

Village Quiz night

The quiz on the 25th May in the village hall was very well attended with twelve teams of six competing and some very interesting team names were in evidence! The 'Eminent Victorians' round proved to be the decisive one which split teams apart and made the later rounds more exciting in terms of who would finally run out as winner.

Many prizes were donated for the raffle and the evening raised the grand sum of £541 towards

the ongoing physiotherapy of young Fraser who was present during the evening collecting quiz answers, drawing the raffle, generally enjoying himself and showing how successful his operation in the USA had been, the fundraising for which, over the past year, his family are very grateful.

Thank you ...

... to the lady who rang to say the number for Broomfield hospital was incorrect in our list of telephone numbers on the inside back page of the Review. It should read **01245 362000.**

New committee elected

Hadfelda WI - Marel Elliston



The April meeting is always the AGM and election of the new committee. Fortunately most of the existing committee agreed to stand for another year, although we were very sorry to lose Sally Patterson who left due to pressure of work. Many thanks to Sally for her hard work over many years. To liven the evening a little we were entertained by the Hadfelda WI Choir.

In May we were delighted to welcome Peter Garner who gave us a fascinating talk about his trip to The Antarctic, South Georgia and The Falkland Islands. He told us about Ernest Shackleton's epic trip to Antarctica in 1914 and the fact that a group was out there at the moment attempting a winter crossing. His photographs of the wild life, especially the penguins, were lovely.

The competition, the letter 'J', was won by Sally Patterson with the jaws of a shark caught by her husband David. There are several social events coming up, so get your diaries ready!

Wednesday 3rd July we are holding a strawberry tea in Virginia Strange's garden from 2.30 to 4.30pm

Our next meeting is on Wednesday 26th June at 7.45pm in the village hall: we will be hearing about the work of a Street Pastor. The competition letter is 'E'. We hope to see you there!

WEA - dates for your diaries

Hold your breath - summer may be here and with it the promise of better weather.

Party in the Park 2013 Saturday 13th July

Our WEA has a promotional stand in the recreation ground where we will have an opportunity to meet and greet new members. Help is needed, please get in touch if you can lend a hand.

Marks Hall, nr Coggeshall, Tuesday 16th July

Guided tour of estate and arboretum, 10.30am Marks Hall car park. Special buggies available for those unable to walk the distance (free, but must be booked in advance). Good food available in the barn. Cost around £6, booking essential.

Future courses in Hatfield Peverel

Autumn: Discovering East Anglian timber-framed buildings - tutor John Walker

Tuesday 1st October 10.15am

Spring: Ingatestone Hall: a jewel in Essex - tutor Margaret Mills.

Tuesday 14th January 2014 10am

Essex Federation Summer School

Monday 1st - Wednesday 3rd July, Castle Methodist Church, Colchester.

Three choices - **Jane Austin**, tutor Valerie Morse; **A Festival of Britten**, tutor Quintus Benziger; **Landscape**, tutor Mark Beesley.

Information from Lesley Naish, 01245 380837, Catherine Voysy, 01245 382595.

Midsummer Music at St. Andrew's Church – Saturday 22nd June

The Church Choir and friends will present an evening of music on **Saturday 22nd June at 7pm** in the church, celebrating a special birthday for one of the longest-serving choir members, Jean Ashby and also the 30th anniversary of the ordination of Fr Stephen Northfield. Together, they have chosen all the items for the evening, which includes music by Handel, Rogers and Hammerstein, Mendelssohn, Haydn, Tim Rice, Andrew Lloyd Webber and John Rutter.

The Choir will be joined by members of the Hadfelda Choir. The Men of St. Andrew's will also be singing during the evening.

Tickets £6 each, available on the night, all proceeds going towards the rewiring fund for the church. **Price includes a glass of wine and nibbles.**

Andy Peddle's Walkathon

John Turner (johnturner40@hotmail.co.uk)

Councillor David Bebb was on hand to welcome walker Andy Peddle when he arrived at the Salvation Army in Maldon Road on Thursday 2nd. May. Andy is walking 7,900 miles, visiting every centre of the Salvation Army in England, Scotland, Wales and Northern Ireland, raising funds for the Army's care of those rescued from human trafficking. The journey began last year in the Shetland Isles and now every centre north of Essex has been visited. 70 year old Andy walked into a coffee morning which raised £210 and was warmly received by around twenty local people.

Speaking to the assembled group, Andy told how his gratitude to God for a good life had inspired him to do a Walkathon for this special cause. After coffee, a cake, and singing a verse of 'You'll never walk alone' Andy set off for the Salvation Army centre in Maldon.



Tasting our way around Europe in four months!

Peverel Wine Club – Vee Green, Secretary
(01245 355723)

April's meeting saw a temporary shift in venue from the village hall to the church hall. Having diligently reminded everyone of the change of venue, Vee went to the village hall herself and was surprised to see a lack of members but instead a large number of participants for a Zumba class! After this initial blip, the evening's tasting 'Italy, from Top to Toe and Back' introduced some excellent white and red Italian wines with appropriate Italian nibbles to accompany each wine.



We stayed in Europe for May's meeting, safely back in the village hall. As the meeting fell on VE Day, Wednesday 8th May, the evening was a VE Day Celebration. For a change, we liberated a number of beers and ciders from the UK, France, Belgium and the Netherlands. Everyone was issued with ration books and all were evacuated from one country to another to sample the beer and cider and accompanying cheeses (or Brussels pâté and chocolate in the case of Belgium)! We also played a number of old-fashioned games in each country including the infamous Belgian

Cowpat Game, Hanging Out the Washing on the Siegfried Line, the Dutch Shula Game and the Bletchley Park Enigma, which involved releasing a bottle of wine by solving the Enigma!

June saw the first of our summer outings, not too far this year, as we strolled along the streets and riverside walks of Witham for the Club's traditional walking treasure hunt followed by supper in a local pub.

We shall be back in Europe on Wednesday 10th July for a Swiss evening, when we shall be tasting the wines, cheeses and (hopefully) chocolates of Switzerland. The club will be supporting the Party in the Park on Saturday 13th July with our Punch Up In The Park. We hasten to add this will be a non-violent opportunity for over-18s in the village to taste and judge the variety of punches we shall be offering, and we look forward to welcoming you to our stall that afternoon.

If in the meantime you'd like to join us at our Swiss tasting on 10th July, there should still be a few spaces bookable, and we should be delighted to welcome you. However, for this and any other meeting (particularly during the summer months when venues and start times are often different), please phone Vee first on 01245 355723.

Community Policing team

Emergency calls 999, non-emergency calls 101

PCSO Nikki Doubleday



Do read this - and don't be had as I was - Ed

Several weeks ago I got back from the shops when there was a knock at the door. A youngish man stood there, large bag on the ground. He said he'd been in prison and now needed to raise money to go on a course to help him turn his life round. He waved a piece of paper at me but I didn't look, I was in a hurry, wanted him to go. I looked at the goods and selected a packet of hankies, two for the price of one but still a vast sum of money at £7.50. What an idiot. We are always preaching in this Review about being careful who you open the door to, what you buy, who you let in. **These so-called sales people should carry a valid Pedlar's Certificate granted by the chief officer of police for the area in which they are trading. If in doubt ring 101 and report them.**

The Police have a similar story to tell - be aware of rogue traders in your area

You may get a knock on your door from someone offering their services to earn a bob or two (legitimate tradesman won't have time to knock at doors looking for work.) The rogues may offer one of the following services - roof repairs, driveways power washed, driveway repairs or replaced, fence repairs, garden services, tree lopping, waste clearance

These persons will present themselves as being genuine and offer professional looking business cards, but the information on them is false with contact numbers being non existent. Please make a point of not taking up the offer of so called trades persons offering their services at your door. Ask a friend or family member to recommend someone. You may like to look for services which have fully checked by Trading Standards www.buywithconfidence.gov.uk If someone does call, say that it is already being dealt with and close the door. **More of these 'Nottingham Knockers' in the August Review.**

If you have vulnerable neighbours nearby, please take time to keep an eye out for them. Often trades persons make a point of calling on the more vulnerable and we can all play a part in ensuring they are OK. If you see a trades vehicle or perhaps someone lopping trees etc. go and knock on the door of the neighbour who knows you and make sure they have not become a victim of a rogue trader. Often these so called trades persons will quote a low price to carry out a repair or to cut a tree down, but then end up charging a more, sometimes hundreds of pounds more. The homeowner is then left in a situation, if they have already cut down a tree for example, and feel they have to pay the price later quoted. If this has happened to you then you should report them to Consumer Direct 08454 040505.

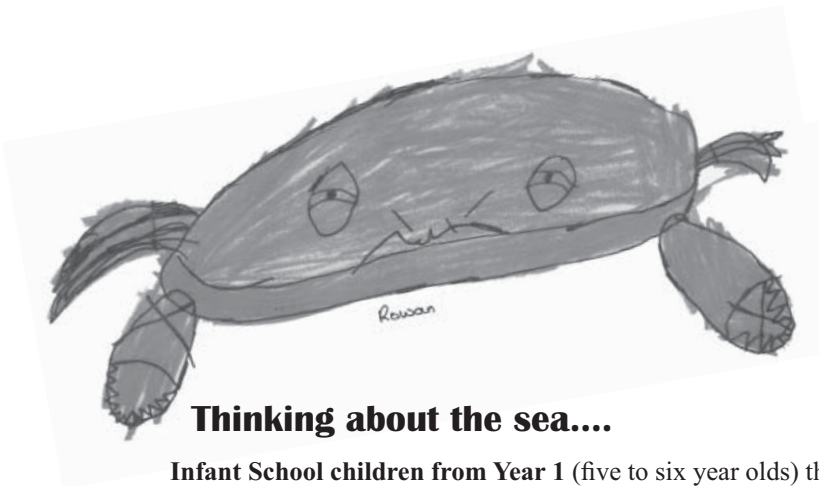
Rag and bone men

Many people now sell their own items at car boot sales or through internet auction sites, and we are familiar with modern van-driving dealers around our neighbourhoods, some ringing a bell as they go.

Reputable collectors operate a valuable service for people to get rid of their items and get them recycled in the right way, but we have received reports that unlicensed collectors are scavenging metal items which people still want. There has been concern from members of the public that these persons are operating without the relevant certificates and in some cases there have been reports of them accessing people's back gardens and sheds and taking property without the owners consent.

While being mindful the collectors provide an invaluable service Essex Police are asking residents to reports any thefts or those noted to be to acting suspiciously within the area.

Emails are still being sent purporting to be from BT Yahoo. These are 'phishing' emails seeking to gain access to the recipient's log-in details via a link within the message. **Don't click the link! Delete the email.**



Thinking about the sea....

Infant School children from Year 1 (five to six year olds) this term have been thinking about the sea and the creatures that live in it. These illustrations of the crab and sea horse are wonderful.

Run, run as fast as you can - you can't catch me I'm the gingerbread man!

Boys and girls from Reception have been reading about the gingerbread man and the adventures that befell him, and have planned their own stories using extra words and drawings. Thank you for their delightful drawings.



Can collection raises £528.57 for Essex Air Ambulance

Throughout the year bags of cans arrive on Sheila PEAR's doorstep in Chestnut Avenue. Sheila is the local volunteer co-ordinator for the Essex Air Ambulance can collection in Hatfield Peverel and recently she

received a letter from the charity. It reads 'We were delighted to receive your kind donation from your can collection. What a fantastic amount, and on behalf of all the people we have assisted we would like to say a big and heartfelt thank you'. If you would like to add cans to the collection, ring Sheila on 380483.

See you at the coffee morning!

Helen Rollason charity

Thank you to everyone who has been supporting the Hatfield Peverel Fund-raising Group's 'Tea for Helen' coffee mornings on the **third Saturday of every month - future dates 15th June/ 20th July/15th August**. They have become a popular local event so please join the group at Yvonne Stewart House for coffee, tea and cakes and friendly chat.

Pub quiz on first Tuesday of the month - 2nd July, 6th August. Call now to book - 01245 380330

We are very grateful to Len Fry and Sandie Treadwell at The Wheatsheaf Pub for their continued support. It only costs £2.50 per person in teams of 4 - 6 to take part in their pub quiz on the first Tuesday of every month, from 8pm. You could win a bottle of wine.

Beer Festival and Fun Day on 25th - 26th August

Following the success of last year's event, there will be another fund-raising Beer Festival and Fun Day at The Wheatsheaf where there will be a barbecue, stalls, games and live music. Come along and enjoy.

Count down to the Vintage Fayre at Cressing Temple barns on Sunday 16th June 10am - 5pm

There will be a great range of stalls selling all things vintage plus tasty food and drink, and a great deal more.

It promises to be a great day out so please join us.

Admission is £5.00 for adults, £2.50 for children under 16 and free for under 5s. A family ticket for two adults and two children is £12.00.

Coach Tour Operator's success

Congratulations to Suzanne Evans of Boon's Calibre Travel, Hatfield Peverel, a finalist in the category for Coach Tourism Professional of the Year, which recognises individual or team excellence within the coach tourism community.

Commenting on the company's success, Suzanne says, 'Being a finalist recognises our commitment to providing excellent customer care and serving our clients well. The many kind comments and testimonials received over the past year were instrumental in our nomination for this award and we would like to thank our clients, indeed friends, for their continued support.'

Keep on walking ...

Hatfield Peverel Walkers -
Graham Bushby (380472)

The group met at the end of May and caught the bus to Langford to begin a five mile walk along the old Maldon to Witham railway track as far as the redundant St Peter's Church - now used by a stained glass designer - before continuing further downstream of the Blackwater river before swinging across three fields to meet Spring Lane and a pit stop at Pear Tree Pantry. Having revitalised themselves the last stretch was across footpaths via Gypsy Lane to the Maldon Road, Letch's Corner, Nounsley play area and back to the village hall.

We were fortunate this time that although the weather was overcast the whole way around the rain held off - hopefully by the next walk summer will have arrived and waterproofs can be replaced with shorts!

Our next walks are planned for **Thursday June 27th and July 25th both meeting at 10am** at the rear of the village hall in Maldon Road, Hatfield Peverel. For new members, information and general queries please ring Graham on 01245 380472.

The Hadfelda Choir

invite you to join them for their
annual

Songs for Summer

Thursday 4 July at 8.00pm

St. Andrew's Church Hall

Wine and nibbles served
during the interval

No admission charge

All donations will go to
Finding Fraser's Feet charity

Useful telephone numbers

Please contact the editors for additions/errors.

Age Concern Essex 01245 264499
Anglian Water, 24 hours 0800 919 155
Braintree District Council 01376 552525

Clean Team ring number above
and ask for Customer Services
Witham Area Office in Witham Library
- for walk-in enquiries only 01376 519625

Churches

St Andrew's (C of E), vicar 01245 380958
Methodist Church, minister 01621 853423
Salvation Army, officer i/c 01245 381897
Catholic Church, Witham, priest 01376 512219

Citizens Advice Bureau Witham 0844 4994719
Drop-in sessions Mon/Tue/Thur/Fri 10am - 1pm
Appointments only Thurs afternoon 1 - 4pm

Doctors, health services

Hatfield Peverel doctors' surgery 01245 380324
Boreham doctors' surgery 01245 467364
NHS Direct 0845 4647
Pharmacy, Hadfelda Square 01245 380130

Electricity - emergency 0800 7838838

Essex County Council 01245 492211

Essex & Suffolk Water 24 hours 0845 7820999

First Essex Buses Ltd 01245 293400

Gas - emergency 0800 111999

Harlequin Children's Centre 01376 535270
Free support and services for children under 5

Hospitals

Broomfield (A&E); St John's, 01245 362000
St Peter's, Maldon

Libraries

Hatfield Peverel 01245 380988
Witham 01376 519625

Police, non-emergency calls 0300 3334444
Local Officer Nicki Doubleday 07974 457258
who can be contacted on this number

Post Office 01245 380201

Railway Information

National Express East Anglia 0845 6007245
National Rail Enquiries (24 hrs) 08457 484950

Registrar of Births, Marriages & Deaths

Witham, by appointment only 01376 323463
Braintree, by appointment only 01376 320762

Relate 01245 258680

Samaritans (24 hours - toll free) 08457 909090

Schools

St Andrew's Junior School 01245 380131
Hatfield Peverel Infant School 01245 380220
Hatfield Peverel Day Nursery 01245 382450
Acorn Childcare 07979 851257

Social Services 0845 6037630

Village Agent Sally Austin 0800 9775858

Village Hall (after 7pm) 01245 381481

Let us know of useful services to add to this list

Hatfield Peverel Parish Council

Councillors and their working parties

Lisa Miller, Parish Clerk 01245 344439
clerk.hatfieldpeverelpc@blueyonder.co.uk

David Broddle, Chairman 01245 382829

Graham Bushby, Traffic 01245 380472

Peter Endersby, Env (chair) 01245 381919

Colin Giffin, Planning (chair) 01621 892351

Elise Gwyn-Williams 01245 382883

John Hannah, Traffic (chair) 01245 381874

Bernard Heard, Vice Chairman 01245 380370

Alan Ingram, Environment 01245 381880

Ted Munt, Environment 01245 381135

Eugene Murphy 01245 380113

Alan Steele 07739 398453

Diane Wallace 01245 381485

Village hall happenings

Bingo (third Thursday in the month) -
20th June, 18th July

Poker (third Saturday in month) -
22nd June, 20th July

Brag (first Friday in month) -
5th July, 2nd August

Darts Monday nights, ladies team Tuesdays

All bookings for hall and meeting rooms
HPCAb bookings@gmail.com
Phone Alan on 07741 140732

Village hall (after 7pm) 01245 381481

See Facebook under -
Hatfield Peverel village hall

Party in the Park 2013 – Saturday 13th July

Tony French (01245 380831) on behalf of the Party in the Park 2013 working group
tony.french@thefrenchfamily.co.uk

For those who attended the Party in the Park last July to celebrate the Olympic Torch passing through the village, you will not want to miss this Party in the Park on Saturday 13th July from 3pm til 11pm on the recreation ground. For those who missed last year's event - **do not miss this year!**

We want this event to be a party by the people of Hatfield Peverel and Nounsley for the people of Hatfield Peverel and Nounsley – a truly community event. **As last year entry will be free, but there will be charges to use some of the attractions.**

We are bringing back some of last years most **popular** attractions for the afternoon and in the evening, by **extra popular** demand, will be Loaded Dice playing from our stage on the recreation ground. We also have lots of new attractions as well.

We are encouraging as many village organisations as possible to come and show what a wide range of activities exist for the entire village to take part in. If your organisation has not been in touch yet, whether you are a voluntary or commercial organisation, it is still not too late, so please contact me.

The event will kick off at 3pm with a grand opening by some very special mystery guests. For your enjoyment, there will be a wide variety of stalls from village organisations, together with the bouncy castle, teacups, etc and the climbing wall. We have booked the Warescote Farm Experience, which includes a group of animals to handle and learn about, and we are also having alpacas and alpaca products for sale along with a spinning demonstration. For steam enthusiasts we have a model traction engine display.

When you get hungry, the Scouts and Guides will provide us with a barbeque, all proceeds towards their much-needed headquarters refurbishment fund. For those with a sweet tooth or two, we are having a cup cake stall. As it is going to be a hot day, with wall-to-wall sunshine, we will of course have ice creams. Teas and coffees will be available as well as alcoholic drinks from the Community Association bar, together with exotic cocktails both alcoholic and non-alcoholic.

Our musical evening will commence at 5pm with the village WI Choir. Providing us with disco music between the various acts will be our very own Mark Weale, and as well as dancing to the disco music, we have obtained not one but two bands. Firstly, the Gentlemen of Io, a band new to the village, and they will be followed by last year's popular Loaded Dice. Musicians are very kindly giving of their time and expertise free of charge, hence we are able to obtain a community discount from the Performing Rights Society.



Lovely tea - pity about the weather! The Editor-in-Chief BEM and her computer wizard about to go in to the Buckingham Palace garden party on the 30th May. It was quite chilly and we needed the jackets, although most of the other guests were made of sterner stuff! A wonderful day to remember