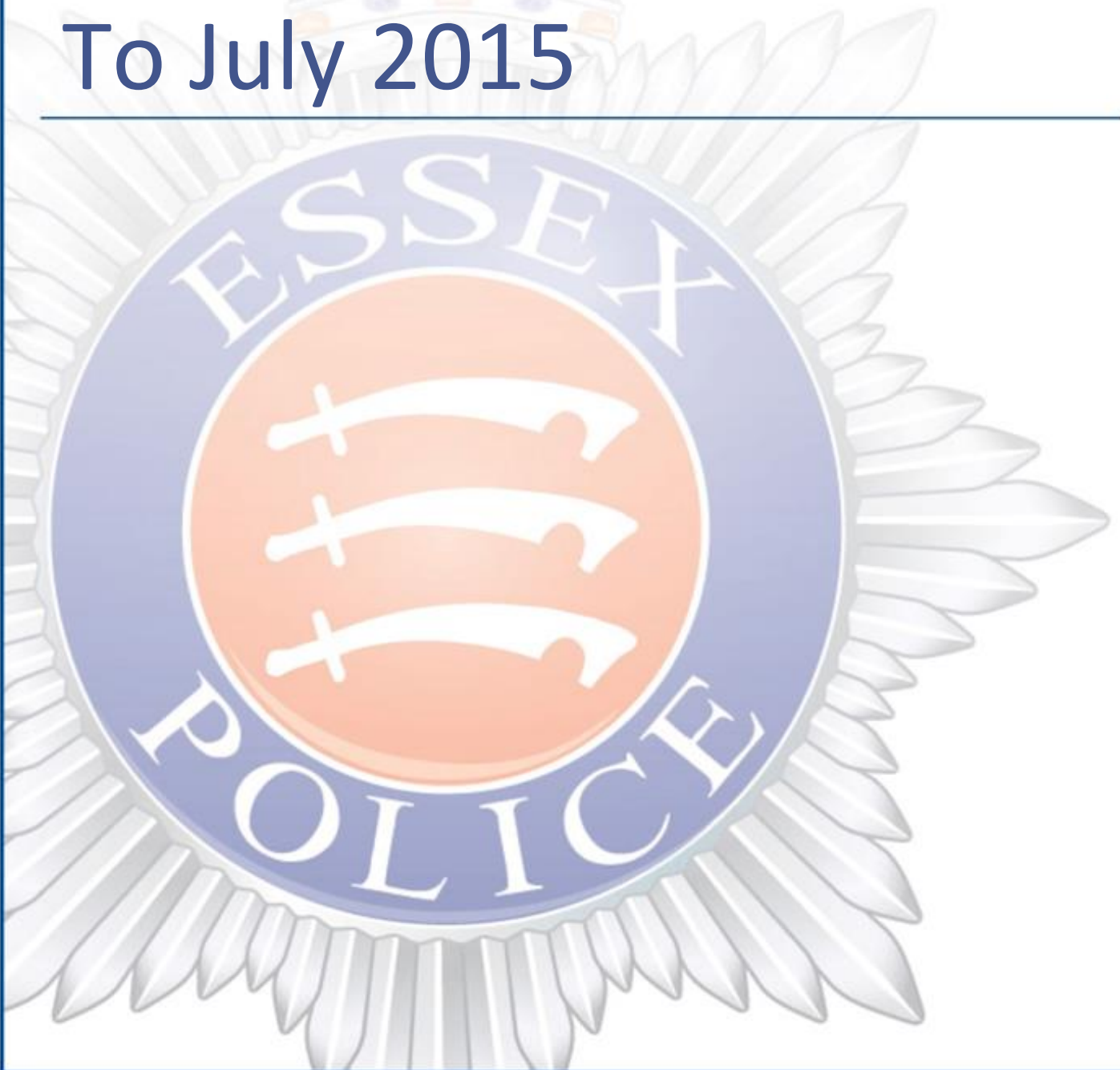


Corporate Services

Essex Police Performance Summary To July 2015



**ESSEX
POLICE**

Protecting and serving Essex

Date: August 2015
Unit: Performance Information Unit
Contact: David Howard



Corporate Services: Performance Summary

Essex Police Performance Summary: To July 2015

1. Introduction

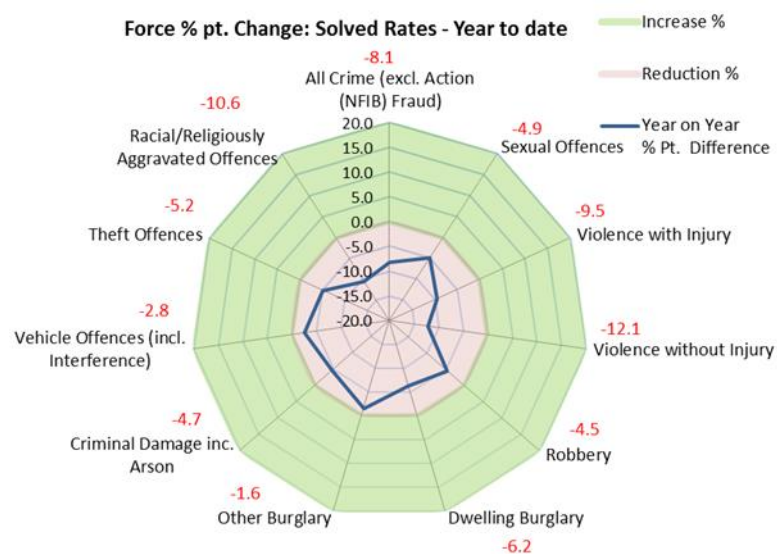
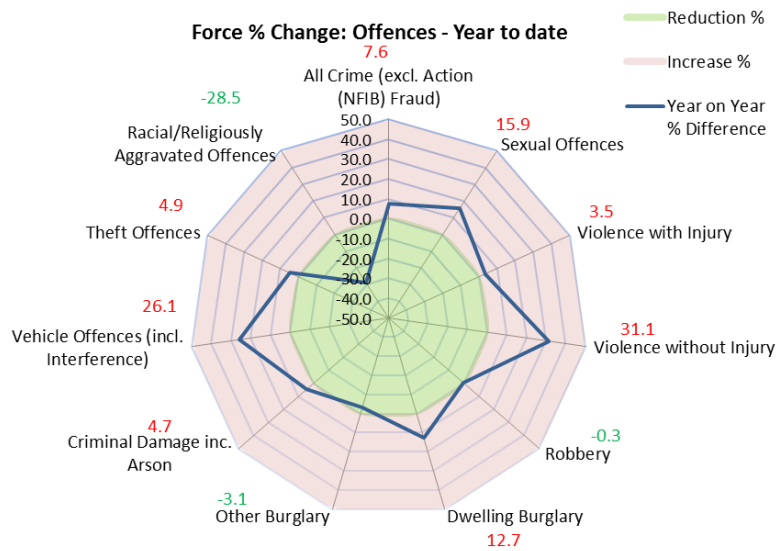
This performance summary is designed to pictorially represent how individual districts are performing within each crime type.

The report includes:

- Charts to show the cumulative number of offences in each district each year, for the specified crime type, with the % difference between the two periods labelled
- Tables of data relating to both of the above

Solved rate: Essex Police could potentially still be under-extracting the number of crimes that have been solved.

2. Current Position

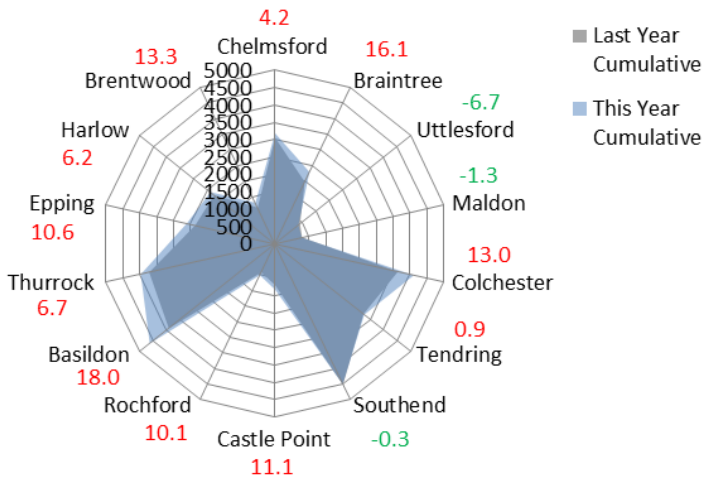




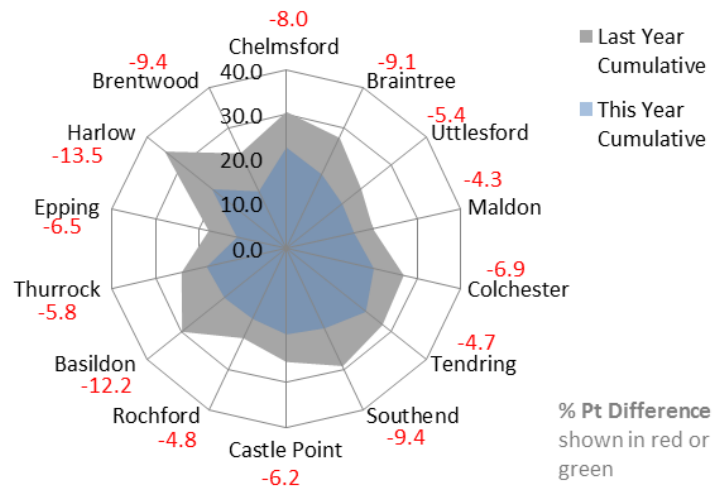
Corporate Services: Performance Summary

Essex Police Performance Summary: To July 2015

All Crime Offences - Year to date % Difference

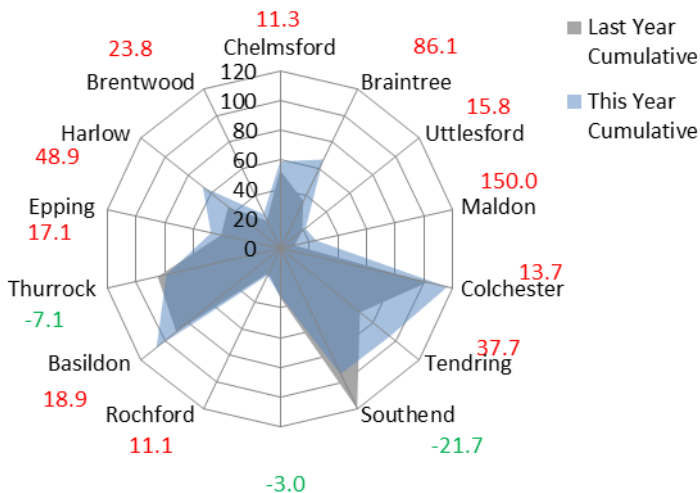


All Crime Solved Rate - Year to date

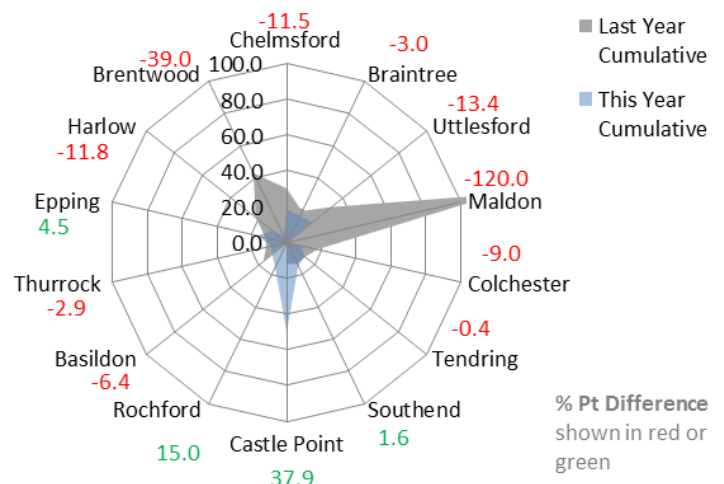


% Pt Difference shown in red or green

Sexual Offences - Year to date % Difference

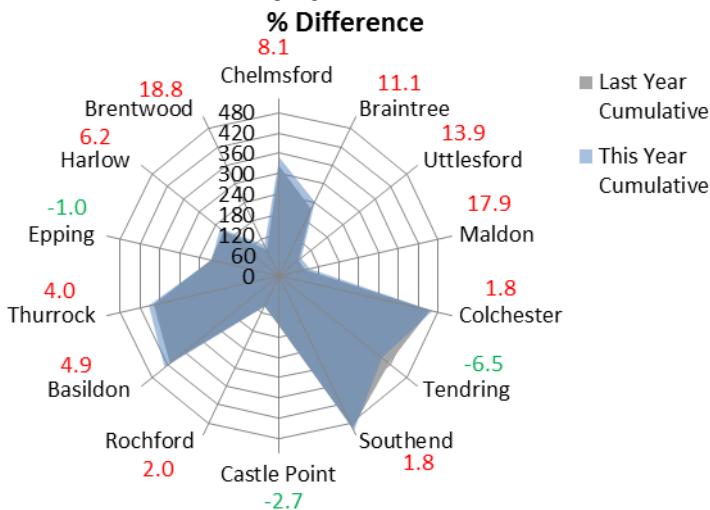


Sexual Offences Solved Rate - Year to date

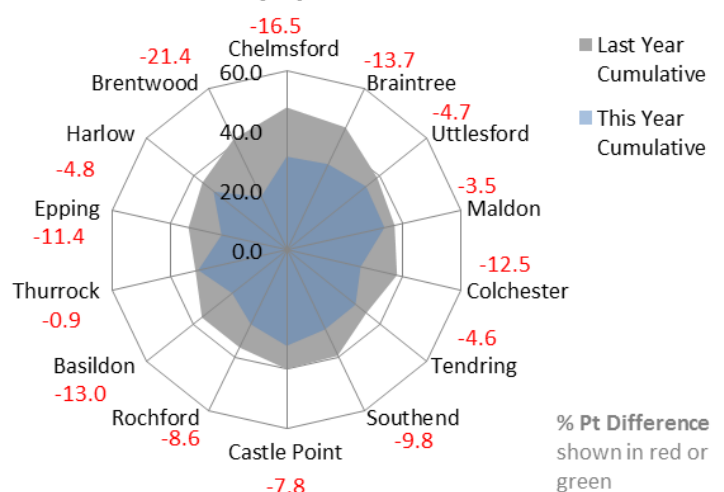


% Pt Difference shown in red or green

Violence with Injury Offences - Year to date



Violence with Injury Solved Rate - Year to date



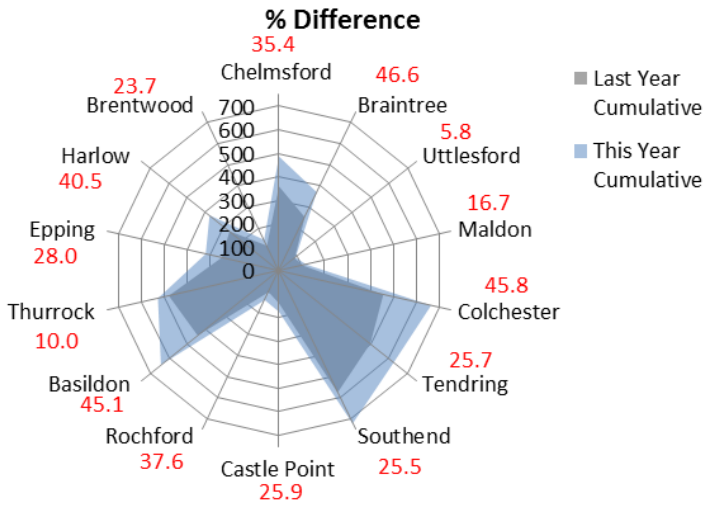
% Pt Difference shown in red or green



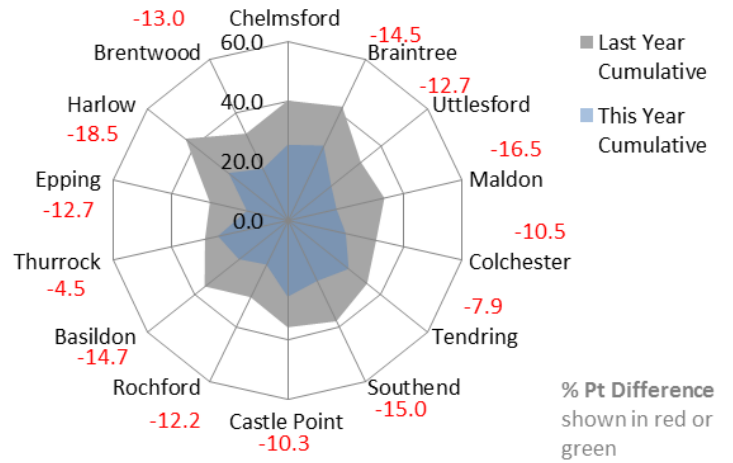
Corporate Services: Performance Summary

Essex Police Performance Summary: To July 2015

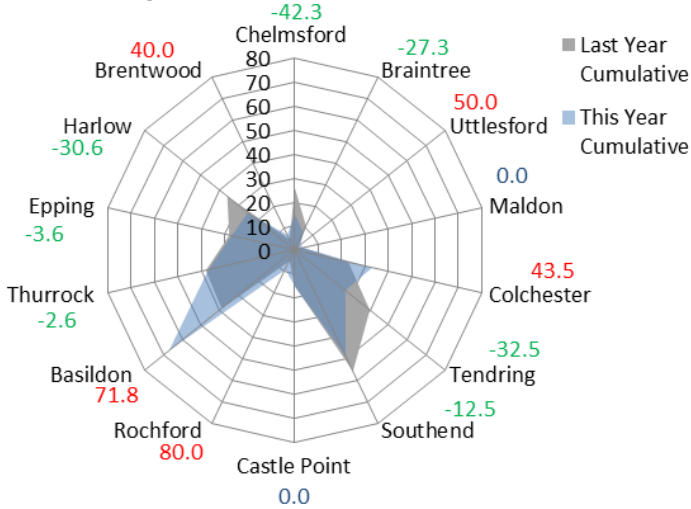
Violence without Injury Offences - Year to date



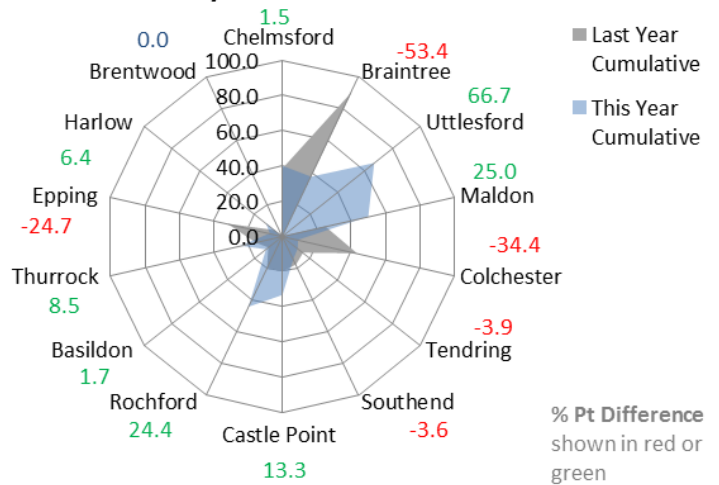
Violence without Injury Solved Rate - Year to date



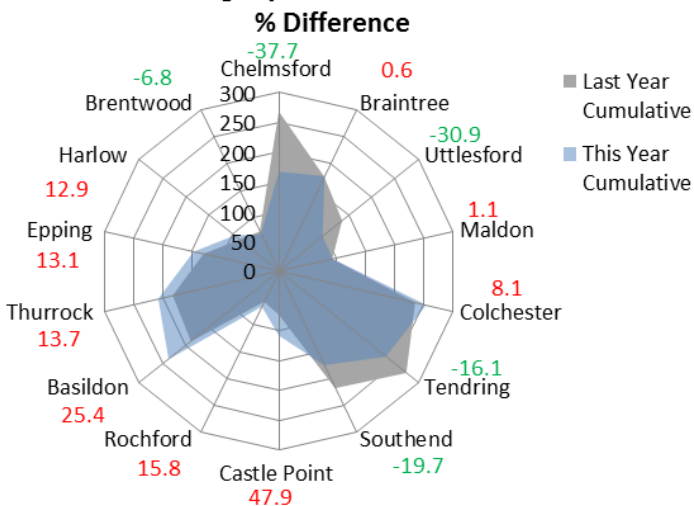
Robbery Offences - Year to date % Difference



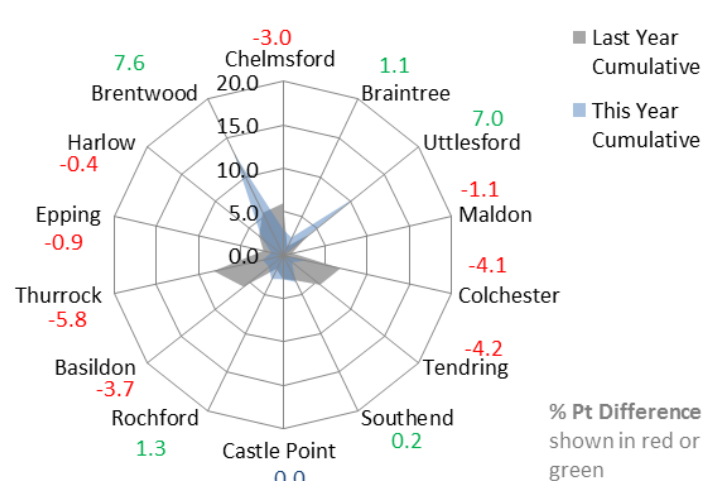
Robbery Solved Rate - Year to date



Other Burglary Offences - Year to date



Other Burglary Solved Rate - Year to date

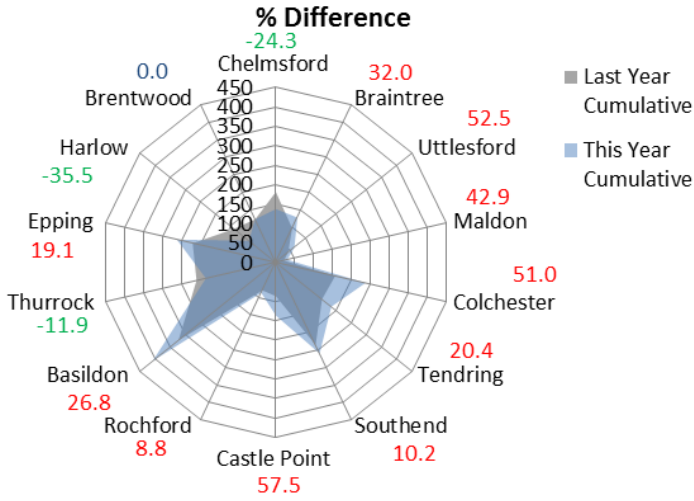




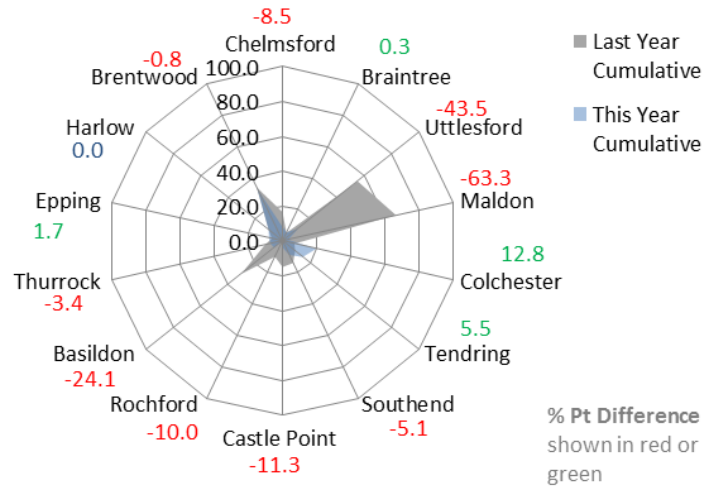
Corporate Services: Performance Summary

Essex Police Performance Summary: To July 2015

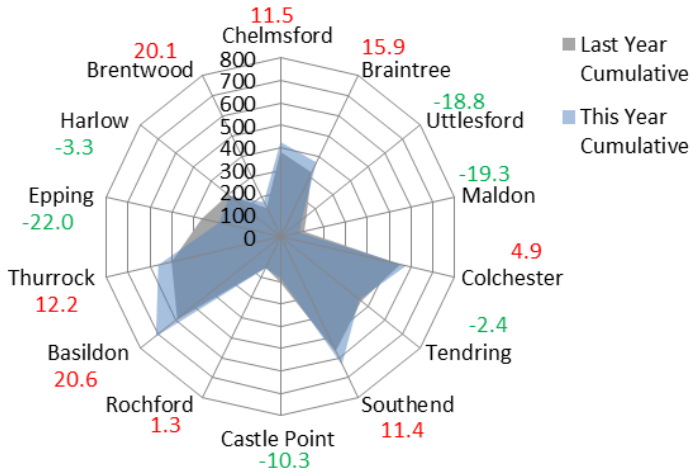
Dwelling Burglary Offences - Year to date



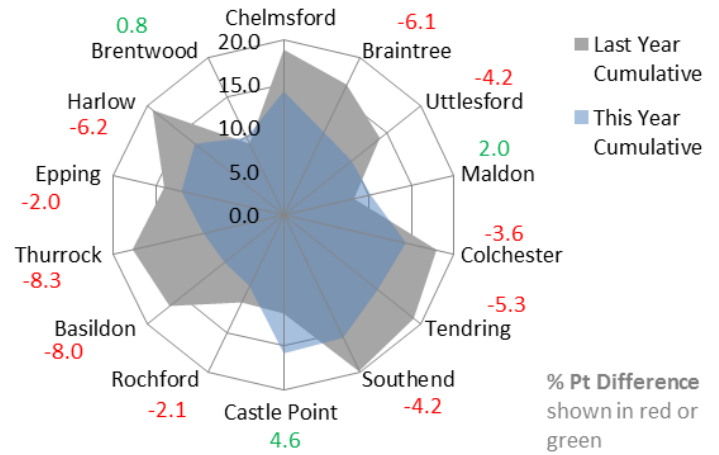
Dwelling Burglary Solved Rate - Year to date



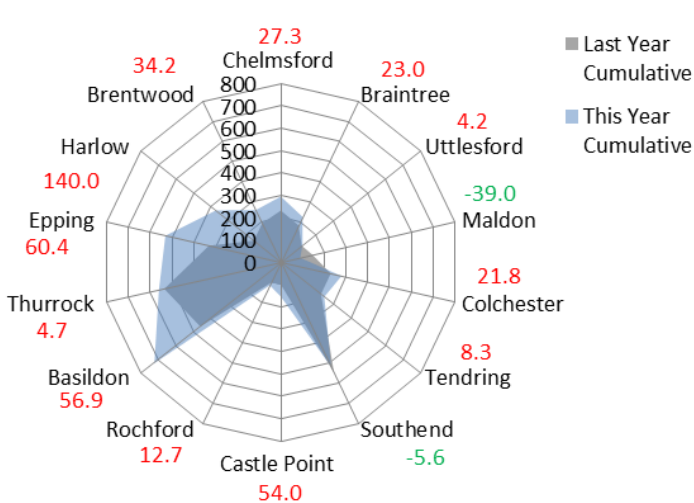
Criminal Damage inc. Arson Offences - Year to date % Difference



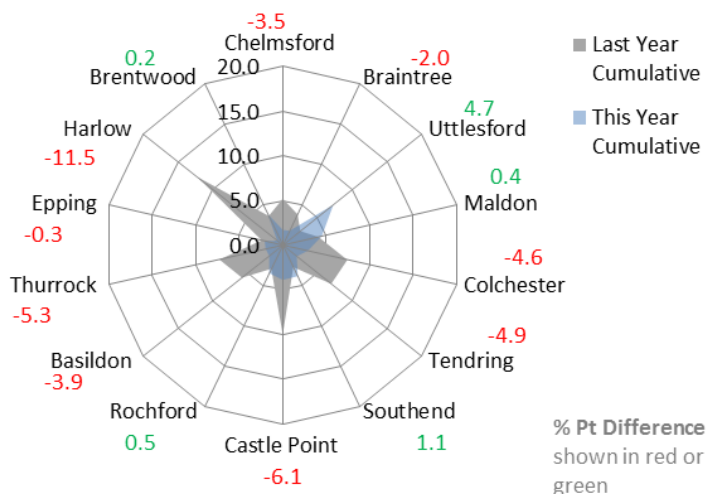
Criminal Damage inc. Arson Solved Rate - Year to date



Vehicle Offences - Year to date % Difference



Vehicle Offences Solved Rate - Year to date

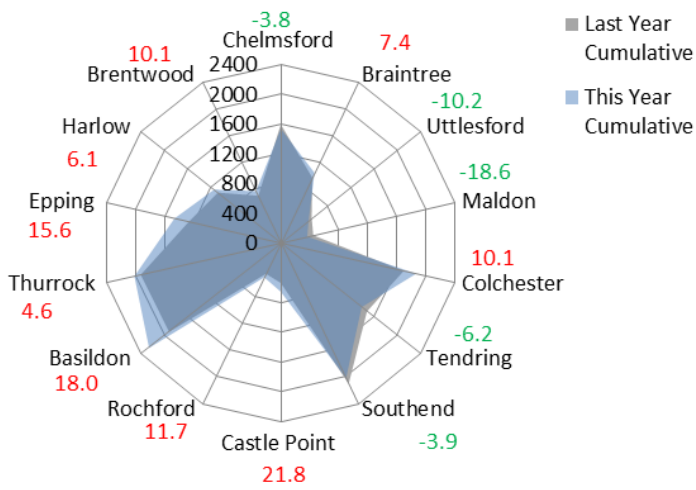




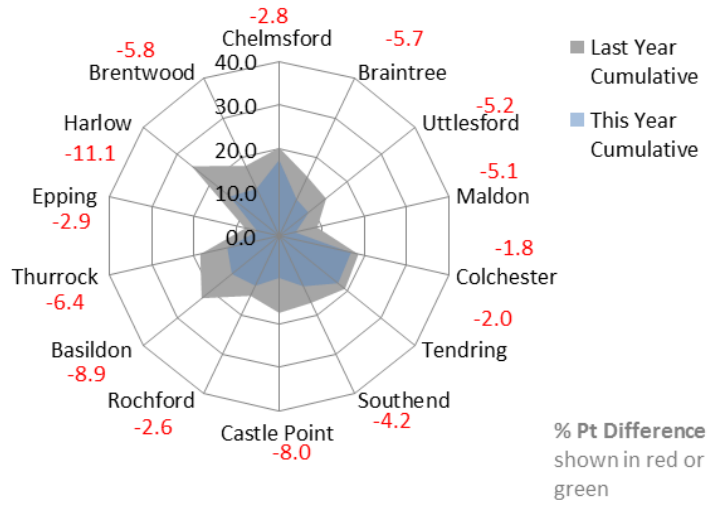
Corporate Services: Performance Summary

Essex Police Performance Summary: To July 2015

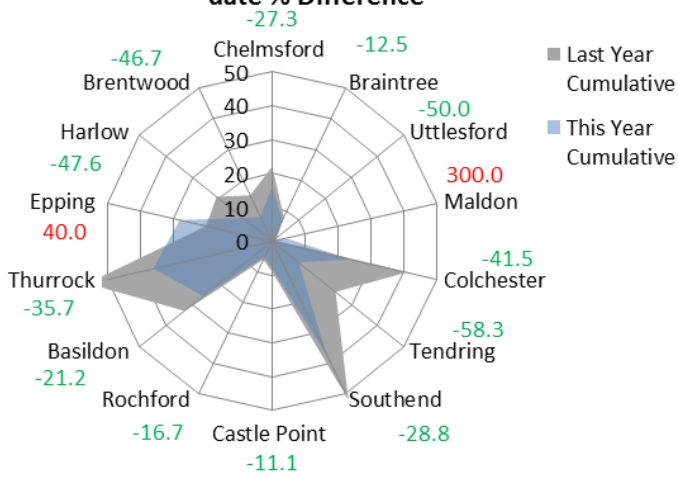
Theft Offences - Year to date % Difference



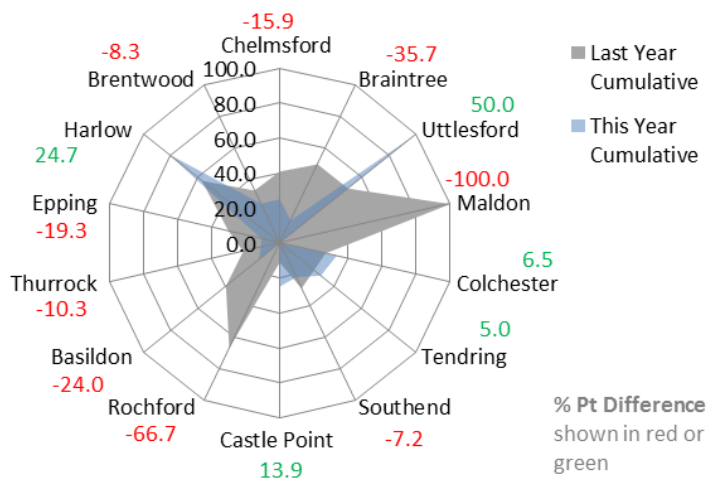
Theft Offences Solved Rate - Year to date



Racial / Religiously Aggravated Offences - Year to date % Difference



Racial/Religiously Aggravated Offences Solved Rate - Year to date





Corporate Services: Performance Summary

Essex Police Performance Summary: To July 2015

Force

Cumulative Year to July

Top Level		Offences			
Crime Type	2014	2015	# diff.	% diff.	
Anti-Social Behaviour (incidents)	20462	20093	-369	-1.8	
All Crime (excl. Action (NFIB) Fraud)	34010	36608	2598	7.6	
- State Based Crime	3485	3484	-1	0.0	
- Victim Based Crime	30525	33124	2599	8.5	

Victim Based Crime		Offences			
Crime Type	2014	2015	# diff.	% diff.	
Violence Against the Person	7742	9163	1421	18.4	
- Homicide	5	12	7	140.0	
- Violence with Injury	3600	3726	126	3.5	
- Violence without Injury	4137	5425	1288	31.1	
Sexual Offences	742	860	118	15.9	
- Rape	272	324	52	19.1	
- Rape - Under 16 yrs	77	131	54	70.1	
- Rape - Over 16 yrs	195	193	-2	-1.0	
- Other Sexual Offences	470	536	66	14.0	
Robbery	328	327	-1	-0.3	
- Robbery of business property	33	0	-33	-100.0	
- Robbery of Personal Property	295	327	32	10.8	
Theft Offences	16903	17739	836	4.9	
- Burglary	4253	4448	195	4.6	
- Dwelling Burglary	2063	2326	263	12.7	
- Other Burglary	2190	2122	-68	-3.1	
- Vehicle Offences (incl. Interference)	3575	4508	933	26.1	
- Theft from Vehicle	2279	2913	634	27.8	
- Theft of Motor Vehicle	973	1134	161	16.5	
- Vehicle Interference	323	461	138	42.7	
- Theft	9075	8783	-292	-3.2	
- Theft from the Person	476	492	16	3.4	
- Theft of Pedal Cycle	796	804	8	1.0	
- Shoplifting	3231	3230	-1	0.0	
- Other Theft	4572	4257	-315	-6.9	
Criminal Damage inc. Arson	4810	5035	225	4.7	
- Criminal Damage	4640	4854	214	4.6	
- Arson	170	181	11	6.5	
Racial/Religiously Aggravated Offences	312	223	-89	-28.5	

State Based Crime		Offences			
Crime Type	2014	2015	# diff.	% diff.	
Drug Offences	1326	929	-397	-29.9	
- Trafficking of Drugs	272	224	-48	-17.6	
- Possession of Drugs	1054	705	-349	-33.1	
Possession of Weapons	297	326	29	9.8	
Public Order	1466	1695	229	15.6	
Miscellaneous Crimes against Society	396	534	138	34.8	



Corporate Services: Performance Summary

Essex Police Performance Summary: To July 2015

Chelmsford

Cumulative Year to July

Top Level	Offences			
Crime Type	2014	2015	# diff.	% diff.
Anti-Social Behaviour (incidents)	1568	1594	26	1.7
All Crime (excl. Action (NFIB) Fraud)	3056	3183	127	4.2
- State Based Crime	324	319	-5	-1.5
- Victim Based Crime	2732	2864	132	4.8

Victim Based Crime	Offences			
Crime Type	2014	2015	# diff.	% diff.
Violence Against the Person	682	835	153	22.4
- Homicide	1	1	0	0.0
- Violence with Injury	322	348	26	8.1
- Violence without Injury	359	486	127	35.4
Sexual Offences	53	59	6	11.3
- Rape	19	26	7	36.8
- Rape - Under 16 yrs	2	6	4	200.0
- Rape - Over 16 yrs	17	20	3	17.6
- Other Sexual Offences	34	33	-1	-2.9
Robbery	26	15	-11	-42.3
- Robbery of business property	2	0	-2	-100.0
- Robbery of Personal Property	24	15	-9	-37.5
Theft Offences	1590	1530	-60	-3.8
- Burglary	449	304	-145	-32.3
- Dwelling Burglary	181	137	-44	-24.3
- Other Burglary	268	167	-101	-37.7
- Vehicle Offences (incl. Interference)	231	294	63	27.3
- Theft from Vehicle	145	189	44	30.3
- Theft of Motor Vehicle	72	63	-9	-12.5
- Vehicle Interference	14	42	28	200.0
- Theft	910	932	22	2.4
- Theft from the Person	64	51	-13	-20.3
- Theft of Pedal Cycle	129	125	-4	-3.1
- Shoplifting	304	391	87	28.6
- Other Theft	413	365	-48	-11.6
Criminal Damage inc. Arson	381	425	44	11.5
- Criminal Damage	366	404	38	10.4
- Arson	15	21	6	40.0
Racial/Religiously Aggravated Offences	22	16	-6	-27.3

State Based Crime	Offences			
Crime Type	2014	2015	# diff.	% diff.
Drug Offences	123	96	-27	-22.0
- Trafficking of Drugs	16	27	11	68.8
- Possession of Drugs	107	69	-38	-35.5
Possession of Weapons	19	25	6	31.6
Public Order	137	151	14	10.2
Miscellaneous Crimes against Society	45	47	2	4.4



Corporate Services: Performance Summary

Essex Police Performance Summary: To July 2015

Braintree

Cumulative Year to July

Top Level		Offences			
Crime Type	2014	2015	# diff.	% diff.	
Anti-Social Behaviour (incidents)	1385	1292	-93	-6.7	
All Crime (excl. Action (NFIB) Fraud)	1974	2291	317	16.1	
- State Based Crime	164	189	25	15.2	
- Victim Based Crime	1810	2102	292	16.1	

Victim Based Crime		Offences			
Crime Type	2014	2015	# diff.	% diff.	
Violence Against the Person	471	612	141	29.9	
- Homicide	1	0	-1	-100.0	
- Violence with Injury	217	241	24	11.1	
- Violence without Injury	253	371	118	46.6	
Sexual Offences	36	67	31	86.1	
- Rape	12	21	9	75.0	
- Rape - Under 16 yrs	6	11	5	83.3	
- Rape - Over 16 yrs	6	10	4	66.7	
- Other Sexual Offences	24	46	22	91.7	
Robbery	11	8	-3	-27.3	
- Robbery of business property	3	0	-3	-100.0	
- Robbery of Personal Property	8	8	0	0.0	
Theft Offences	972	1044	72	7.4	
- Burglary	273	305	32	11.7	
- Dwelling Burglary	97	128	31	32.0	
- Other Burglary	176	177	1	0.6	
- Vehicle Offences (incl. Interference)	183	225	42	23.0	
- Theft from Vehicle	140	174	34	24.3	
- Theft of Motor Vehicle	31	25	-6	-19.4	
- Vehicle Interference	12	26	14	116.7	
- Theft	516	514	-2	-0.4	
- Theft from the Person	36	26	-10	-27.8	
- Theft of Pedal Cycle	34	58	24	70.6	
- Shoplifting	159	126	-33	-20.8	
- Other Theft	287	304	17	5.9	
Criminal Damage inc. Arson	320	371	51	15.9	
- Criminal Damage	308	359	51	16.6	
- Arson	12	12	0	0.0	
Racial/Religiously Aggravated Offences	8	7	-1	-12.5	

State Based Crime		Offences			
Crime Type	2014	2015	# diff.	% diff.	
Drug Offences	65	54	-11	-16.9	
- Trafficking of Drugs	6	5	-1	-16.7	
- Possession of Drugs	59	49	-10	-16.9	
Possession of Weapons	7	11	4	57.1	
Public Order	77	94	17	22.1	
Miscellaneous Crimes against Society	15	30	15	100.0	



Corporate Services: Performance Summary

Essex Police Performance Summary: To July 2015

Uttlesford

Cumulative Year to July

Top Level		Offences			
Crime Type	2014	2015	# diff.	% diff.	
Anti-Social Behaviour (incidents)	506	468	-38	-7.5	
All Crime (excl. Action (NFIB) Fraud)	923	861	-62	-6.7	
- State Based Crime	65	63	-2	-3.1	
- Victim Based Crime	858	798	-60	-7.0	

Victim Based Crime		Offences			
Crime Type	2014	2015	# diff.	% diff.	
Violence Against the Person	158	176	18	11.4	
- Homicide	0	3	3	-	
- Violence with Injury	72	82	10	13.9	
- Violence without Injury	86	91	5	5.8	
Sexual Offences	19	22	3	15.8	
- Rape	7	10	3	42.9	
- Rape - Under 16 yrs	1	6	5	500.0	
- Rape - Over 16 yrs	6	4	-2	-33.3	
- Other Sexual Offences	12	12	0	0.0	
Robbery	2	3	1	50.0	
- Robbery of business property	1	0	-1	-100.0	
- Robbery of Personal Property	1	3	2	200.0	
Theft Offences	530	476	-54	-10.2	
- Burglary	176	155	-21	-11.9	
- Dwelling Burglary	40	61	21	52.5	
- Other Burglary	136	94	-42	-30.9	
- Vehicle Offences (incl. Interference)	119	124	5	4.2	
- Theft from Vehicle	81	91	10	12.3	
- Theft of Motor Vehicle	22	16	-6	-27.3	
- Vehicle Interference	16	17	1	6.3	
- Theft	235	197	-38	-16.2	
- Theft from the Person	3	18	15	500.0	
- Theft of Pedal Cycle	10	6	-4	-40.0	
- Shoplifting	44	24	-20	-45.5	
- Other Theft	178	149	-29	-16.3	
Criminal Damage inc. Arson	149	121	-28	-18.8	
- Criminal Damage	145	115	-30	-20.7	
- Arson	4	6	2	50.0	
Racial/Religiously Aggravated Offences	2	1	-1	-50.0	

State Based Crime		Offences			
Crime Type	2014	2015	# diff.	% diff.	
Drug Offences	21	17	-4	-19.0	
- Trafficking of Drugs	3	2	-1	-33.3	
- Possession of Drugs	18	15	-3	-16.7	
Possession of Weapons	4	8	4	100.0	
Public Order	25	30	5	20.0	
Miscellaneous Crimes against Society	15	8	-7	-46.7	



Corporate Services: Performance Summary

Essex Police Performance Summary: To July 2015

Maldon

Cumulative Year to July

Top Level	Offences			
Crime Type	2014	2015	# diff.	% diff.
Anti-Social Behaviour (incidents)	420	413	-7	-1.7
All Crime (excl. Action (NFIB) Fraud)	799	789	-10	-1.3
- State Based Crime	49	96	47	95.9
- Victim Based Crime	750	693	-57	-7.6

Victim Based Crime	Offences			
Crime Type	2014	2015	# diff.	% diff.
Violence Against the Person	180	212	32	17.8
- Homicide	0	1	1	-
- Violence with Injury	78	92	14	17.9
- Violence without Injury	102	119	17	16.7
Sexual Offences	10	25	15	150.0
- Rape	5	19	14	280.0
- Rape - Under 16 yrs	3	13	10	333.3
- Rape - Over 16 yrs	2	6	4	200.0
- Other Sexual Offences	5	6	1	20.0
Robbery	4	4	0	0.0
- Robbery of business property	0	0	0	-
- Robbery of Personal Property	4	4	0	0.0
Theft Offences	447	364	-83	-18.6
- Burglary	113	123	10	8.8
- Dwelling Burglary	21	30	9	42.9
- Other Burglary	92	93	1	1.1
- Vehicle Offences (incl. Interference)	146	89	-57	-39.0
- Theft from Vehicle	100	61	-39	-39.0
- Theft of Motor Vehicle	32	21	-11	-34.4
- Vehicle Interference	14	7	-7	-50.0
- Theft	188	152	-36	-19.1
- Theft from the Person	11	16	5	45.5
- Theft of Pedal Cycle	16	5	-11	-68.8
- Shoplifting	38	24	-14	-36.8
- Other Theft	123	107	-16	-13.0
Criminal Damage inc. Arson	109	88	-21	-19.3
- Criminal Damage	107	85	-22	-20.6
- Arson	2	3	1	50.0
Racial/Religiously Aggravated Offences	1	4	3	300.0

State Based Crime	Offences			
Crime Type	2014	2015	# diff.	% diff.
Drug Offences	16	33	17	106.3
- Trafficking of Drugs	4	9	5	125.0
- Possession of Drugs	12	24	12	100.0
Possession of Weapons	3	6	3	100.0
Public Order	27	44	17	63.0
Miscellaneous Crimes against Society	3	13	10	333.3



Corporate Services: Performance Summary

Essex Police Performance Summary: To July 2015

Colchester

Cumulative Year to July

Top Level		Offences			
Crime Type	2014	2015	# diff.	% diff.	
Anti-Social Behaviour (incidents)	2184	2215	31	1.4	
All Crime (excl. Action (NFIB) Fraud)	3635	4106	471	13.0	
- State Based Crime	350	384	34	9.7	
- Victim Based Crime	3285	3722	437	13.3	

Victim Based Crime		Offences			
Crime Type	2014	2015	# diff.	% diff.	
Violence Against the Person	913	1128	215	23.5	
- Homicide	2	0	-2	-100.0	
- Violence with Injury	455	463	8	1.8	
- Violence without Injury	456	665	209	45.8	
Sexual Offences	102	116	14	13.7	
- Rape	35	49	14	40.0	
- Rape - Under 16 yrs	10	16	6	60.0	
- Rape - Over 16 yrs	25	33	8	32.0	
- Other Sexual Offences	67	67	0	0.0	
Robbery	23	33	10	43.5	
- Robbery of business property	1	0	-1	-100.0	
- Robbery of Personal Property	22	33	11	50.0	
Theft Offences	1696	1867	171	10.1	
- Burglary	392	491	99	25.3	
- Dwelling Burglary	157	237	80	51.0	
- Other Burglary	235	254	19	8.1	
- Vehicle Offences (incl. Interference)	229	279	50	21.8	
- Theft from Vehicle	134	171	37	27.6	
- Theft of Motor Vehicle	70	85	15	21.4	
- Vehicle Interference	25	23	-2	-8.0	
- Theft	1075	1097	22	2.0	
- Theft from the Person	47	60	13	27.7	
- Theft of Pedal Cycle	142	187	45	31.7	
- Shoplifting	391	405	14	3.6	
- Other Theft	495	445	-50	-10.1	
Criminal Damage inc. Arson	551	578	27	4.9	
- Criminal Damage	541	560	19	3.5	
- Arson	10	18	8	80.0	
Racial/Religiously Aggravated Offences	41	24	-17	-41.5	

State Based Crime		Offences			
Crime Type	2014	2015	# diff.	% diff.	
Drug Offences	149	90	-59	-39.6	
- Trafficking of Drugs	19	25	6	31.6	
- Possession of Drugs	130	65	-65	-50.0	
Possession of Weapons	15	25	10	66.7	
Public Order	157	199	42	26.8	
Miscellaneous Crimes against Society	29	70	41	141.4	



Corporate Services: Performance Summary

Essex Police Performance Summary: To July 2015

Tendring

Cumulative Year to July

Top Level	Offences			
Crime Type	2014	2015	# diff.	% diff.
Anti-Social Behaviour (incidents)	1883	1840	-43	-2.3
All Crime (excl. Action (NFIB) Fraud)	3261	3291	30	0.9
- State Based Crime	298	315	17	5.7
- Victim Based Crime	2963	2976	13	0.4

Victim Based Crime	Offences			
Crime Type	2014	2015	# diff.	% diff.
Violence Against the Person	911	1014	103	11.3
- Homicide	0	2	2	-
- Violence with Injury	413	386	-27	-6.5
- Violence without Injury	498	626	128	25.7
Sexual Offences	69	95	26	37.7
- Rape	23	38	15	65.2
- Rape - Under 16 yrs	4	16	12	300.0
- Rape - Over 16 yrs	19	22	3	15.8
- Other Sexual Offences	46	57	11	23.9
Robbery	40	27	-13	-32.5
- Robbery of business property	2	0	-2	-100.0
- Robbery of Personal Property	38	27	-11	-28.9
Theft Offences	1481	1389	-92	-6.2
- Burglary	426	413	-13	-3.1
- Dwelling Burglary	152	183	31	20.4
- Other Burglary	274	230	-44	-16.1
- Vehicle Offences (incl. Interference)	230	249	19	8.3
- Theft from Vehicle	158	182	24	15.2
- Theft of Motor Vehicle	53	49	-4	-7.5
- Vehicle Interference	19	18	-1	-5.3
- Theft	825	727	-98	-11.9
- Theft from the Person	25	40	15	60.0
- Theft of Pedal Cycle	65	37	-28	-43.1
- Shoplifting	340	324	-16	-4.7
- Other Theft	395	326	-69	-17.5
Criminal Damage inc. Arson	462	451	-11	-2.4
- Criminal Damage	438	434	-4	-0.9
- Arson	24	17	-7	-29.2
Racial/Religiously Aggravated Offences	24	10	-14	-58.3

State Based Crime	Offences			
Crime Type	2014	2015	# diff.	% diff.
Drug Offences	97	79	-18	-18.6
- Trafficking of Drugs	7	20	13	185.7
- Possession of Drugs	90	59	-31	-34.4
Possession of Weapons	22	20	-2	-9.1
Public Order	139	155	16	11.5
Miscellaneous Crimes against Society	40	61	21	52.5



Corporate Services: Performance Summary

Essex Police Performance Summary: To July 2015

Southend

Cumulative Year to July

Top Level	Offences			
Crime Type	2014	2015	# diff.	% diff.
Anti-Social Behaviour (incidents)	2849	2644	-205	-7.2
All Crime (excl. Action (NFIB) Fraud)	4516	4502	-14	-0.3
- State Based Crime	594	474	-120	-20.2
- Victim Based Crime	3922	4028	106	2.7

Victim Based Crime	Offences			
Crime Type	2014	2015	# diff.	% diff.
Violence Against the Person	1074	1231	157	14.6
- Homicide	1	2	1	100.0
- Violence with Injury	497	506	9	1.8
- Violence without Injury	576	723	147	25.5
Sexual Offences	120	94	-26	-21.7
- Rape	51	37	-14	-27.5
- Rape - Under 16 yrs	13	15	2	15.4
- Rape - Over 16 yrs	38	22	-16	-42.1
- Other Sexual Offences	69	57	-12	-17.4
Robbery	56	49	-7	-12.5
- Robbery of business property	6	0	-6	-100.0
- Robbery of Personal Property	50	49	-1	-2.0
Theft Offences	2103	2020	-83	-3.9
- Burglary	454	435	-19	-4.2
- Dwelling Burglary	236	260	24	10.2
- Other Burglary	218	175	-43	-19.7
- Vehicle Offences (incl. Interference)	549	518	-31	-5.6
- Theft from Vehicle	329	362	33	10.0
- Theft of Motor Vehicle	153	113	-40	-26.1
- Vehicle Interference	67	43	-24	-35.8
- Theft	1100	1067	-33	-3.0
- Theft from the Person	74	70	-4	-5.4
- Theft of Pedal Cycle	137	107	-30	-21.9
- Shoplifting	400	387	-13	-3.3
- Other Theft	489	503	14	2.9
Criminal Damage inc. Arson	569	634	65	11.4
- Criminal Damage	539	623	84	15.6
- Arson	30	11	-19	-63.3
Racial/Religiously Aggravated Offences	52	37	-15	-28.8

State Based Crime	Offences			
Crime Type	2014	2015	# diff.	% diff.
Drug Offences	256	119	-137	-53.5
- Trafficking of Drugs	106	46	-60	-56.6
- Possession of Drugs	150	73	-77	-51.3
Possession of Weapons	35	36	1	2.9
Public Order	244	248	4	1.6
Miscellaneous Crimes against Society	59	71	12	20.3



Corporate Services: Performance Summary

Essex Police Performance Summary: To July 2015

Castle Point

Cumulative Year to July

Top Level	Offences			
Crime Type	2014	2015	# diff.	% diff.
Anti-Social Behaviour (incidents)	850	791	-59	-6.9
All Crime (excl. Action (NFIB) Fraud)	1193	1326	133	11.1
- State Based Crime	111	116	5	4.5
- Victim Based Crime	1082	1210	128	11.8

Victim Based Crime	Offences			
Crime Type	2014	2015	# diff.	% diff.
Violence Against the Person	289	321	32	11.1
- Homicide	0	0	0	-
- Violence with Injury	150	146	-4	-2.7
- Violence without Injury	139	175	36	25.9
Sexual Offences	33	32	-1	-3.0
- Rape	15	12	-3	-20.0
- Rape - Under 16 yrs	5	7	2	40.0
- Rape - Over 16 yrs	10	5	-5	-50.0
- Other Sexual Offences	18	20	2	11.1
Robbery	15	15	0	0.0
- Robbery of business property	1	0	-1	-100.0
- Robbery of Personal Property	14	15	1	7.1
Theft Offences	541	659	118	21.8
- Burglary	160	245	85	53.1
- Dwelling Burglary	87	137	50	57.5
- Other Burglary	73	108	35	47.9
- Vehicle Offences (incl. Interference)	100	154	54	54.0
- Theft from Vehicle	59	92	33	55.9
- Theft of Motor Vehicle	35	50	15	42.9
- Vehicle Interference	6	12	6	100.0
- Theft	281	260	-21	-7.5
- Theft from the Person	10	15	5	50.0
- Theft of Pedal Cycle	28	17	-11	-39.3
- Shoplifting	74	71	-3	-4.1
- Other Theft	169	157	-12	-7.1
Criminal Damage inc. Arson	204	183	-21	-10.3
- Criminal Damage	193	176	-17	-8.8
- Arson	11	7	-4	-36.4
Racial/Religiously Aggravated Offences	9	8	-1	-11.1

State Based Crime	Offences			
Crime Type	2014	2015	# diff.	% diff.
Drug Offences	47	30	-17	-36.2
- Trafficking of Drugs	7	6	-1	-14.3
- Possession of Drugs	40	24	-16	-40.0
Possession of Weapons	5	6	1	20.0
Public Order	49	66	17	34.7
Miscellaneous Crimes against Society	10	14	4	40.0



Corporate Services: Performance Summary

Essex Police Performance Summary: To July 2015

Rochford

Cumulative Year to July

Top Level		Offences			
Crime Type	2014	2015	# diff.	% diff.	
Anti-Social Behaviour (incidents)	607	599	-8	-1.3	
All Crime (excl. Action (NFIB) Fraud)	920	1013	93	10.1	
- State Based Crime	82	73	-9	-11.0	
- Victim Based Crime	838	940	102	12.2	

Victim Based Crime		Offences			
Crime Type	2014	2015	# diff.	% diff.	
Violence Against the Person	200	240	40	20.0	
- Homicide	0	0	0	-	
- Violence with Injury	99	101	2	2.0	
- Violence without Injury	101	139	38	37.6	
Sexual Offences	18	20	2	11.1	
- Rape	7	7	0	0.0	
- Rape - Under 16 yrs	4	2	-2	-50.0	
- Rape - Over 16 yrs	3	5	2	66.7	
- Other Sexual Offences	11	13	2	18.2	
Robbery	5	9	4	80.0	
- Robbery of business property	1	0	-1	-100.0	
- Robbery of Personal Property	4	9	5	125.0	
Theft Offences	462	516	54	11.7	
- Burglary	137	153	16	11.7	
- Dwelling Burglary	80	87	7	8.8	
- Other Burglary	57	66	9	15.8	
- Vehicle Offences (incl. Interference)	102	115	13	12.7	
- Theft from Vehicle	70	62	-8	-11.4	
- Theft of Motor Vehicle	25	48	23	92.0	
- Vehicle Interference	7	5	-2	-28.6	
- Theft	223	248	25	11.2	
- Theft from the Person	13	9	-4	-30.8	
- Theft of Pedal Cycle	13	16	3	23.1	
- Shoplifting	78	121	43	55.1	
- Other Theft	119	102	-17	-14.3	
Criminal Damage inc. Arson	153	155	2	1.3	
- Criminal Damage	147	150	3	2.0	
- Arson	6	5	-1	-16.7	
Racial/Religiously Aggravated Offences	6	5	-1	-16.7	

State Based Crime		Offences			
Crime Type	2014	2015	# diff.	% diff.	
Drug Offences	36	19	-17	-47.2	
- Trafficking of Drugs	16	3	-13	-81.3	
- Possession of Drugs	20	16	-4	-20.0	
Possession of Weapons	5	7	2	40.0	
Public Order	27	38	11	40.7	
Miscellaneous Crimes against Society	14	9	-5	-35.7	



Corporate Services: Performance Summary

Essex Police Performance Summary: To July 2015

Basildon

Cumulative Year to July

Top Level	Offences			
Crime Type	2014	2015	# diff.	% diff.
Anti-Social Behaviour (incidents)	2394	2293	-101	-4.2
All Crime (excl. Action (NFIB) Fraud)	3920	4624	704	18.0
- State Based Crime	422	393	-29	-6.9
- Victim Based Crime	3498	4231	733	21.0

Victim Based Crime	Offences			
Crime Type	2014	2015	# diff.	% diff.
Violence Against the Person	855	1076	221	25.8
- Homicide	0	1	1	-
- Violence with Injury	412	432	20	4.9
- Violence without Injury	443	643	200	45.1
Sexual Offences	90	107	17	18.9
- Rape	27	34	7	25.9
- Rape - Under 16 yrs	7	16	9	128.6
- Rape - Over 16 yrs	20	18	-2	-10.0
- Other Sexual Offences	63	73	10	15.9
Robbery	39	67	28	71.8
- Robbery of business property	4	0	-4	-100.0
- Robbery of Personal Property	35	67	32	91.4
Theft Offences	1922	2267	345	18.0
- Burglary	510	644	134	26.3
- Dwelling Burglary	321	407	86	26.8
- Other Burglary	189	237	48	25.4
- Vehicle Offences (incl. Interference)	462	725	263	56.9
- Theft from Vehicle	311	449	138	44.4
- Theft of Motor Vehicle	111	182	71	64.0
- Vehicle Interference	40	94	54	135.0
- Theft	950	898	-52	-5.5
- Theft from the Person	51	55	4	7.8
- Theft of Pedal Cycle	70	55	-15	-21.4
- Shoplifting	330	397	67	20.3
- Other Theft	499	391	-108	-21.6
Criminal Damage inc. Arson	592	714	122	20.6
- Criminal Damage	581	698	117	20.1
- Arson	11	16	5	45.5
Racial/Religiously Aggravated Offences	33	26	-7	-21.2

State Based Crime	Offences			
Crime Type	2014	2015	# diff.	% diff.
Drug Offences	217	127	-90	-41.5
- Trafficking of Drugs	27	31	4	14.8
- Possession of Drugs	190	96	-94	-49.5
Possession of Weapons	23	31	8	34.8
Public Order	134	182	48	35.8
Miscellaneous Crimes against Society	48	53	5	10.4



Corporate Services: Performance Summary

Essex Police Performance Summary: To July 2015

Thurrock

Cumulative Year to July

Top Level		Offences			
Crime Type	2014	2015	# diff.	% diff.	
Anti-Social Behaviour (incidents)	2078	2121	43	2.1	
All Crime (excl. Action (NFIB) Fraud)	3725	3974	249	6.7	
- State Based Crime	309	352	43	13.9	
- Victim Based Crime	3416	3622	206	6.0	

Victim Based Crime		Offences			
Crime Type	2014	2015	# diff.	% diff.	
Violence Against the Person	860	923	63	7.3	
- Homicide	0	0	0	-	
- Violence with Injury	379	394	15	4.0	
- Violence without Injury	481	529	48	10.0	
Sexual Offences	85	79	-6	-7.1	
- Rape	31	32	1	3.2	
- Rape - Under 16 yrs	9	12	3	33.3	
- Rape - Over 16 yrs	22	20	-2	-9.1	
- Other Sexual Offences	54	47	-7	-13.0	
Robbery	38	37	-1	-2.6	
- Robbery of business property	9	0	-9	-100.0	
- Robbery of Personal Property	29	37	8	27.6	
Theft Offences	1932	2021	89	4.6	
- Burglary	393	393	0	0.0	
- Dwelling Burglary	210	185	-25	-11.9	
- Other Burglary	183	208	25	13.7	
- Vehicle Offences (incl. Interference)	536	561	25	4.7	
- Theft from Vehicle	311	315	4	1.3	
- Theft of Motor Vehicle	189	205	16	8.5	
- Vehicle Interference	36	41	5	13.9	
- Theft	1003	1067	64	6.4	
- Theft from the Person	44	49	5	11.4	
- Theft of Pedal Cycle	69	93	24	34.8	
- Shoplifting	398	416	18	4.5	
- Other Theft	492	509	17	3.5	
Criminal Damage inc. Arson	501	562	61	12.2	
- Criminal Damage	480	524	44	9.2	
- Arson	21	38	17	81.0	
Racial/Religiously Aggravated Offences	56	36	-20	-35.7	

State Based Crime		Offences			
Crime Type	2014	2015	# diff.	% diff.	
Drug Offences	87	94	7	8.0	
- Trafficking of Drugs	17	19	2	11.8	
- Possession of Drugs	70	75	5	7.1	
Possession of Weapons	31	37	6	19.4	
Public Order	146	160	14	9.6	
Miscellaneous Crimes against Society	45	61	16	35.6	



Corporate Services: Performance Summary

Essex Police Performance Summary: To July 2015

Epping

Cumulative Year to July

Top Level		Offences			
Crime Type	2014	2015	# diff.	% diff.	
Anti-Social Behaviour (incidents)	1387	1384	-3	-0.2	
All Crime (excl. Action (NFIB) Fraud)	2364	2614	250	10.6	
- State Based Crime	205	263	58	28.3	
- Victim Based Crime	2159	2351	192	8.9	

Victim Based Crime		Offences			
Crime Type	2014	2015	# diff.	% diff.	
Violence Against the Person	457	525	68	14.9	
- Homicide	0	0	0	-	
- Violence with Injury	207	205	-2	-1.0	
- Violence without Injury	250	320	70	28.0	
Sexual Offences	41	48	7	17.1	
- Rape	21	14	-7	-33.3	
- Rape - Under 16 yrs	7	6	-1	-14.3	
- Rape - Over 16 yrs	14	8	-6	-42.9	
- Other Sexual Offences	20	34	14	70.0	
Robbery	28	27	-1	-3.6	
- Robbery of business property	1	0	-1	-100.0	
- Robbery of Personal Property	27	27	0	0.0	
Theft Offences	1270	1468	198	15.6	
- Burglary	350	409	59	16.9	
- Dwelling Burglary	220	262	42	19.1	
- Other Burglary	130	147	17	13.1	
- Vehicle Offences (incl. Interference)	331	531	200	60.4	
- Theft from Vehicle	193	329	136	70.5	
- Theft of Motor Vehicle	104	150	46	44.2	
- Vehicle Interference	34	52	18	52.9	
- Theft	589	528	-61	-10.4	
- Theft from the Person	33	14	-19	-57.6	
- Theft of Pedal Cycle	23	27	4	17.4	
- Shoplifting	157	151	-6	-3.8	
- Other Theft	376	336	-40	-10.6	
Criminal Damage inc. Arson	363	283	-80	-22.0	
- Criminal Damage	357	276	-81	-22.7	
- Arson	6	7	1	16.7	
Racial/Religiously Aggravated Offences	20	28	8	40.0	

State Based Crime		Offences			
Crime Type	2014	2015	# diff.	% diff.	
Drug Offences	47	63	16	34.0	
- Trafficking of Drugs	6	9	3	50.0	
- Possession of Drugs	41	54	13	31.7	
Possession of Weapons	11	15	4	36.4	
Public Order	116	145	29	25.0	
Miscellaneous Crimes against Society	31	40	9	29.0	



Corporate Services: Performance Summary

Essex Police Performance Summary: To July 2015

Harlow

Cumulative Year to July

Top Level	Offences			
Crime Type	2014	2015	# diff.	% diff.
Anti-Social Behaviour (incidents)	1558	1438	-120	-7.7
All Crime (excl. Action (NFIB) Fraud)	2244	2383	139	6.2
- State Based Crime	300	249	-51	-17.0
- Victim Based Crime	1944	2134	190	9.8

Victim Based Crime	Offences			
Crime Type	2014	2015	# diff.	% diff.
Violence Against the Person	479	602	123	25.7
- Homicide	0	1	1	-
- Violence with Injury	210	223	13	6.2
- Violence without Injury	269	378	109	40.5
Sexual Offences	45	67	22	48.9
- Rape	18	20	2	11.1
- Rape - Under 16 yrs	5	4	-1	-20.0
- Rape - Over 16 yrs	13	16	3	23.1
- Other Sexual Offences	27	47	20	74.1
Robbery	36	25	-11	-30.6
- Robbery of business property	1	0	-1	-100.0
- Robbery of Personal Property	35	25	-10	-28.6
Theft Offences	1082	1148	66	6.1
- Burglary	223	185	-38	-17.0
- Dwelling Burglary	138	89	-49	-35.5
- Other Burglary	85	96	11	12.9
- Vehicle Offences (incl. Interference)	155	372	217	140.0
- Theft from Vehicle	109	266	157	144.0
- Theft of Motor Vehicle	28	63	35	125.0
- Vehicle Interference	18	43	25	138.9
- Theft	704	591	-113	-16.1
- Theft from the Person	32	26	-6	-18.8
- Theft of Pedal Cycle	41	44	3	7.3
- Shoplifting	398	260	-138	-34.7
- Other Theft	233	261	28	12.0
Criminal Damage inc. Arson	302	292	-10	-3.3
- Criminal Damage	289	281	-8	-2.8
- Arson	13	11	-2	-15.4
Racial/Religiously Aggravated Offences	21	11	-10	-47.6

State Based Crime	Offences			
Crime Type	2014	2015	# diff.	% diff.
Drug Offences	127	82	-45	-35.4
- Trafficking of Drugs	36	17	-19	-52.8
- Possession of Drugs	91	65	-26	-28.6
Possession of Weapons	16	18	2	12.5
Public Order	135	112	-23	-17.0
Miscellaneous Crimes against Society	22	37	15	68.2



Corporate Services: Performance Summary

Essex Police Performance Summary: To July 2015

Brentwood

Cumulative Year to July

Top Level		Offences			
Crime Type	2014	2015	# diff.	% diff.	
Anti-Social Behaviour (incidents)	678	807	129	19.0	
All Crime (excl. Action (NFIB) Fraud)	1154	1308	154	13.3	
- State Based Crime	80	82	2	2.5	
- Victim Based Crime	1074	1226	152	14.2	
Victim Based Crime		Offences			
Crime Type	2014	2015	# diff.	% diff.	
Violence Against the Person	203	248	45	22.2	
- Homicide	0	1	1	-	
- Violence with Injury	85	101	16	18.8	
- Violence without Injury	118	146	28	23.7	
Sexual Offences	21	26	5	23.8	
- Rape	1	5	4	400.0	
- Rape - Under 16 yrs	1	1	0	0.0	
- Rape - Over 16 yrs	0	4	4	-	
- Other Sexual Offences	20	21	1	5.0	
Robbery	5	7	2	40.0	
- Robbery of business property	1	0	-1	-100.0	
- Robbery of Personal Property	4	7	3	75.0	
Theft Offences	701	772	71	10.1	
- Burglary	197	192	-5	-2.5	
- Dwelling Burglary	123	123	0	0.0	
- Other Burglary	74	69	-5	-6.8	
- Vehicle Offences (incl. Interference)	193	259	66	34.2	
- Theft from Vehicle	132	160	28	21.2	
- Theft of Motor Vehicle	46	62	16	34.8	
- Vehicle Interference	15	37	22	146.7	
- Theft	311	321	10	3.2	
- Theft from the Person	10	21	11	110.0	
- Theft of Pedal Cycle	19	27	8	42.1	
- Shoplifting	66	77	11	16.7	
- Other Theft	216	196	-20	-9.3	
Criminal Damage inc. Arson	144	173	29	20.1	
- Criminal Damage	139	165	26	18.7	
- Arson	5	8	3	60.0	
Racial/Religiously Aggravated Offences	15	8	-7	-46.7	
State Based Crime		Offences			
Crime Type	2014	2015	# diff.	% diff.	
Drug Offences	29	14	-15	-51.7	
- Trafficking of Drugs	2	5	3	150.0	
- Possession of Drugs	27	9	-18	-66.7	
Possession of Weapons	2	4	2	100.0	
Public Order	38	52	14	36.8	
Miscellaneous Crimes against Society	11	12	1	9.1	