

# Making the links

an essex parish partnership

## Monthly Bulletin

### Local Bus Network Review Consultation Running 4 August 2016 – 28 September 2016

In 2015 Essex County Council began a thorough review of its financial support for those local bus services that it pays for across the County. This consultation is the start of the second part of the review and looks at 70 services across Essex where the current contract ends in 2017, we have grouped together services by geographical area in order to make it easier for the public to see whether their service is part of the review. (Please note there are no services from the Tendering district included in the review).

The consultation runs from **04 August 2016** to **28 September 2016**.

The questionnaire is available from ECC libraries, or online:

<https://surveys.essexinsight.org.uk/BusConsultation>

or by phoning: 03457 430 430.

District and Parish councils, plus other stakeholders have been contacted directly and posters are available 'on bus' and at Essex libraries.

If you have any further queries, please contact [passenger.transport@essex.gov.uk](mailto:passenger.transport@essex.gov.uk).

### Inside this issue

#### September 2016

<b>Park &amp; Ride New Timetable</b>	<b>1</b>
<b>Trading Standards</b>	<b>2</b>
<b>Planning News &amp; Planning Applications</b>	<b>14</b>

#### Change of Parish Clerk?

To ensure information is sent to the correct person/council, please let me know as soon as possible if there has been a change of parish clerk. I am responsible for updating the Essex County Council (ECC) central database of parish and town councils; I also send alerts to the various ECC departments of any changes.

You can contact me either by email: [angela.balcombe@essex.gov.uk](mailto:angela.balcombe@essex.gov.uk)

or telephone:  
033301 38008



## **New Chelmsford Park and Ride timetable set to start**

A new park and ride timetable offering earlier and more frequent peak-time journeys into and out of Chelmsford is set to begin next week.

The new Cross City timetable is set to start on Tuesday, 30 August for buses from Sandon and Chelmer Valley.

Buses will run from Sandon, through the city centre to Chelmer Valley and vice versa with all through services now stopping at Chelmsford Railway Station and Anglia Ruskin University.

During the peak periods, extra buses will just run between Sandon and the city centre on a similar route to the current Sandon service.

The major changes for users will be:

- Pre-7am services into the city from both sites
- Additional peak hour journeys between Sandon and the City Centre
- Sandon customers who usually catch the bus back to the site from Victoria Road South, can use the neighbouring Duke Street stop for more services
- Customers returning from the City Centre to Sandon can also board buses at Reed Agency, the Job Centre or Parkway stops.
- Sandon customers travelling on Cross City buses into the City will need to alight at Mildmay Car Park or Victoria Road South stops for access to the City Centre.
- Chelmer Valley customers who usually use the Job Centre stop will need to go to the neighbouring Mildmay Car Park or Victoria Road South stop for return services back to the site.

The new timetable will be trialled for three months, before being reviewed later this year.

Full information and the new timetable is available online at [www.essex.gov.uk/parkandride](http://www.essex.gov.uk/parkandride). New bus stop posters will be put up at all stops when the new service begins.

Drivers wishing to use the Park and Ride can use the postcodes CM2 7RU (Sandon) and CM3 3PR (Chelmer Valley) to navigate to each car park. Both sites are also clearly signposted from all nearby routes.

The timetable for services to Broomfield Hospital will not change.

---

# Essex County Council

## Trading Standards Update

### Summer Edition 2016

---



Welcome to the latest edition of the Trading Standards Update.

This is a bumper summer edition covering a wide range of Trading Standards issues. The activities range from animal health and welfare relating to problems with puppies and a dangerous spider to the safety of consumers related to perfume, tobacco, cancer cures, spotlights, explosives, aquarium lights and a bubble machine.

The service is currently seeking your help with intelligence on the sale of counterfeit and non-duty paid tobacco. Tobacco is a product which is injurious to health but consumers put themselves at much greater risk if they are purchasing counterfeit cigarettes and tobacco as no one knows what they contain. The sniffer dogs have already found caches of counterfeit tobacco and are ready to find more.

An ongoing project the service is undertaking is in relation to scams. We may be targeted, at some time or another, by a scam or scams but many of our vulnerable residents are being bombarded with mailings, telephone calls, online scams and calls from doorstep/rogue traders. Can I ask you all to check on family, friends and neighbours to ensure that they are not being targeted? Residents are often too embarrassed to report these incidents so may be suffering in silence.

It is very pleasing to see an Essex Trading Standards Officer given a national award by The Chartered Trading Standards Institute for an article written for their magazine, TS Today, relating to a prosecution she undertook regarding a bogus cancer cure treatment.

I would also ask you to contact the Trading Standards national helpline via 03454 040506, if you are concerned about a relative, neighbour or friend who may have been the target of a rogue/doorstep trader. These traders are very active at the present time across the county.

Cllr Anne Brown  
Cabinet Member for Corporate, Communities and Customers

## INCEY WINCEY SPIDER...

The specialist officer for animal health and welfare was contacted by an import officer at the Animal and Plant Health Agency (APHA) for advice on what should be done with a spider found in a suitcase by a member of the public following a holiday in Mexico. The finder did not want to kill the spider so was advised to contact the local RSPCA or zoos and advised that it should not be released into the wild under any circumstances due to the potential threat to indigenous species. Research was carried out and the spider was found to be a 'Brown Recluse/Violin' spider which can be venomous in its bite and deemed to be highly toxic to humans. Following advice from a local zoo the member of the public updated APHA/TS stating that the spider '.....will no longer be undertaking virtuoso performances, having been dispatched'.

## SNEAKY TRADER!

During a recent visit to Basildon Town Centre officers noticed a stall had set up in the market on a **non-market day**. A closer inspection found the majority of goods to be counterfeit clothing. As the officers were not geared up for a massive seizure at that time the trader was given stern 'advice' and was given 45 minutes to pack up, leave and not to return. He was also advised that if found again selling in Essex he would be subject to forfeiture of his goods and a prosecution. A further visit 2 weeks later confirmed that the trader had complied.

Traders selling counterfeit goods damage the local economy, therefore it is essential to limit their ability to trade illegally in our county.

## NOT HEAVEN SCENT



Officers received a consumer complaint from a lady who had been given a bottle of perfume by her gran which, on use had caused burns all the way up her arms. On inspection, the product, from the United Arab Emirates, was found to be non-compliant for the EU market as it did not have any EU importers details on the product, (there must be a name and address provided). It was also not registered on the Cosmetic Products Notification Portal which is a requirement for **all** cosmetic products. To register a product it must have undergone a full safety assessment carried out by a qualified chemist, bio-chemist or similar.

The product has been removed from sale by the retailer and the online marketplace voluntarily; however, it can be a very popular product in some ethnic communities so please check when you purchase this or a similar product that it has an EU address on the label so they can be contacted should problems occur. The importer for this particular product is based in France so the matter has been referred to the French authorities to investigate.

## **LICENCE REVOKED: ROCHFORD NEWS**

Following intelligence received regarding the sale of alcohol to 14 and 16 year olds, Trading Standards Officers carried out an underage test purchase at the premises of Rochford News, 67-69 West Street, Rochford, SS4 1BE. The 16 year old volunteer was able to purchase 4 cans of Carlsberg Skol Super (8% abv) without being challenged for identification.

Prior to the test purchase the shop had previously been prosecuted for the sale of alcohol to a 16 year old – and a penalty fine of £1618.00 imposed by Southend Magistrate’s Court. In addition, on a separate occasion illicit tobacco, counterfeit DVDs and pornographic DVDs had also been found on the premises by Trading Standards Officers and seized for destruction.

Such activities undermine two of the four licensing objectives - tackling crime and disorder and the protection of children from harm - and it was felt, by both Essex Police Licensing and Trading Standards, that a review of the premises licence was both proportionate and necessary.

Following the review hearing the committee decided to revoke the premises licence, meaning that the shop is no longer allowed to sell alcohol.

## **SNIFF AND TELL**



Officers recently took part in a joint operation seeking intelligence regarding the supply of counterfeit or non-duty paid tobacco. With the cost of tobacco rising to almost £10 for a packet of 20 cigarettes, smokers may purchase cheaper sources of tobacco without thinking of the consequences to their health.

No one knows what dangerous substances are contained in a counterfeit cigarette or tobacco.

The operation saw officers in various locations across the county handing out leaflets to shoppers asking for help with locating suppliers of illicit tobacco. The information could be provided anonymously by telephone if this was a preferred option. Information gained was then used to target premises using the sniffer dogs that are specially trained for searching out tobacco. This was especially successful in Basildon where in just two premises, our officers and our little hound, managed to seize over 5000 cigarettes and over 130 pouches of tobacco.

The operations have taken place in Maldon, Chelmsford, Canvey Island and Basildon to date and so far proven to be a great success. We will be continuing throughout the county later in the year so if you see us, please come and say hello, stroke the dog and pass over any info that you may have!!!

## **CHELMSFORD AND MALDON UNITED AGAINST KNIFE CRIME**

Following a couple of recent high profile stabbings in the Chelmsford and Maldon areas, we have been working in partnership with Essex Police to raise awareness of the devastating consequences of knife crime.

All shops selling knives in the Chelmsford and Maldon Districts received an advice visit from Trading Standards and Essex Police as part of this campaign. The age restriction on knives and bladed items is 18 years old. Officers advised shopkeepers to implement 'Challenge 25' policies and to ensure staff training is undertaken to ensure customers provide a valid form of ID if they wish to purchase a knife.

The advice visits were then followed up with 10 test purchases in Chelmsford and 8 in Maldon using an 18 year old volunteer. Our volunteer was refused at 14 shops for failing to provide valid ID, however they still managed to purchase a knife 4 times without being questioned – a failure rate of 38% in Maldon and 10% in Chelmsford.

These businesses were retested and no further sales were made.

## **WHO THE PRESA CANARIO ARE YOU?**



A veterinary surgeon in West Essex contacted Trading Standards after a client brought a Bull Mastiff cross Presa Canario puppy into their surgery for treatment. The client had informed the vet that he had imported the dog from Germany. The vet was able to confirm this by checking the microchip; however, as the dog was only 9 weeks old, it must have been imported illegally.



Restrictions on rabies vaccinations state dogs cannot be given the vaccine until they are at least 12 weeks old. A further 3 week wait is then required to ensure the vaccine has been effective before importation.

The vet informed the client that the dog would have to be quarantined. However, the client stated he would not allow this happen.

Further investigations resulted in a joint visit with Essex Police due to intelligence regarding the owner.

A visit was made to the address given to the vet, by two Trading Standards Officers and three Police Officers. A person at the property denied knowing the dog owner and although there was a puppy at the flat it was not the one we were looking for.

Further intelligence indicated another property with links to the owner and a second visit was made the next day but unfortunately there was no sign of the puppy or the owner. If the owner pays another visit to a Vet we will be back on the case.

NB. A Presa Canario comes from the Canary Islands and is a close relation to the Bull Mastiff. These dogs were originally bred for livestock control but more recently have been used as guard dogs or as fighting dogs!

## LOAN SHARK DE-TOOTHED

The England Illegal Money Lending Team, working in partnership with Essex Trading Standards, Essex County Council and Essex Police, executed a warrant at an address in North Essex where it was believed that an illegal money lender resided.

The suspect was taken into custody and questioned by officers from the Team. The suspect made a full admission to illegal money lending and accepted a caution.

Nationally, Illegal Money Lending Teams have secured more than 338 prosecutions for illegal money lending and related activities leading to nearly 222 years' worth of custodial sentences. They have written off over £63.5 million worth of illegal debt and helped over 27,500 people.

### To report a loan shark:

Call the 24/7 confidential hotline 0300 555 2222

E-mail [reportaloanshark@stoploansharks.gov.uk](mailto:reportaloanshark@stoploansharks.gov.uk)

Private message on [www.facebook.com/stoploansharksproject](https://www.facebook.com/stoploansharksproject)

## KERNEL OF LIES

Essex Trading Standards officer Susan Pembroke was awarded the 2015 prize for the best article in the *TS Today* magazine, a magazine produced by the Chartered Trading Standards Institute (CTSI) with the aim of promoting best practice, providing legal updates and information to keep officers up to date. The award was presented by the Chair of the College of Fellows at the Trading Standards Institute conference in Telford at a ceremony to award achievement across the profession.

The article related to a complex investigation undertaken by Susan into two seemingly independent websites which proved to be linked for the purposes of selling a bogus cancer prevention, treatment and cure costing hundreds of pounds targeted at vulnerable consumers suffering from cancer. The eating of ground apricot kernels, advocated as part of this so called cancer treatment, caused the release of cyanide from the kernels which led to cyanide poisoning of a cancer sufferer. The Food Standards agency guidance on safe levels of consumption of apricot kernels has recently been reduced from 2 per day to zero!

The promotor of this cure was successfully prosecuted by ECC Trading Standards and received a suspended sentence due partly to his advanced years and guilty plea. A Proceeds of Crime investigation was undertaken by ECC Trading Standard's Financial Investigator which resulted in the defendant being ordered to pay £160,000, helping to send out the message that crime doesn't pay!

Best *TS Today* Article Award



A complex case investigating a website that advertised potentially poisonous products to cancer sufferers won the Best *TS Today* Article Award. Author Susan Pembroke, of Essex County Council, accepted the award for her article, 'Kernel of lies', which was published in the May 2015 edition.

The judging panel described it as 'an easy read about an interesting and unusual case, which demonstrated how cooperation between enforcement agencies can work to obtain a successful outcome'.

## HAVE YOU BEEN SCAMMED?

July was National Scam Awareness month, although scams can affect anyone at any time so we need to be vigilant all year round.

This national campaign was undertaken in Essex by Trading Standards and Essex Police with some District Councils, libraries and leisure facilities joining in with Scamnesty bins. The month was split into phone scams, online scams, mailing scams and doorstep/rogue trading scams. We focussed on mailing and doorstep scams as these are the ones that tend to affect the more vulnerable in our communities.

A stall was set up in the Atrium and outside of the Library at County Hall and the campaign was launched by Councillor Aldridge, the Chairman of Essex County Council. People used our Scamnesty bin to hand in scam mail and during the month contacts were made with other services and organisations to assist us to disseminate the messages to a wider audience.



Doorstep/Rogue traders, scammers and faulty used car sales are three of the biggest issues combatted by Trading Standards in Essex. To help you avoid the most common tricks con-artists use, Essex Trading Standards have released a series of animated videos, which you can find below: Please share them with organisations or individuals who could assist in raising awareness of these issues.

### Animations

Scams: <https://www.youtube.com/watch?v=SLipNSm0tP4>

Rogue traders: <https://www.youtube.com/watch?v=3sZom540ipY>

Used cars: <https://www.youtube.com/watch?v=jZJokCCFU9Q>

## PET PASSPORT

We received a referral from the City of London regarding a 10 week old puppy that had been taken into a veterinary practice for a routine welfare check. The vet was told by the owner and also the breeder of the puppy that it had been imported from Romania. This is a contravention of animal health legislation as the 'Pet Passport Scheme' had not been complied with. This states that puppies imported into the UK have to be at least 12 weeks old in order to be vaccinated against rabies and then a further 21 days has to pass before the puppy can be imported to ensure it is free from rabies. The owner was visited at his address and the dog was taken into quarantine that same day at the expense of the owner who was not at all happy with the situation and realised he should have been more cautious



## **PARTNERSHIP WORKING**

Trading Standards were invited to the 'Good to Great' event organised by Adult Social Care, Operations North. The event took place over 2 days and was attended by 150 Adult social workers and Occupational therapists from the North of the county.

Trading Standards gave a presentation on the work they undertake relating to the safety and wellbeing of older and vulnerable residents who are targeted by scammers and doorstep traders and to promote the Buy with Confidence Scheme. Information was presented on the signs to look out for and how to report concerns.

A case study was included which involved an organised crime gang of over 14 rogue traders who operated in the Clacton and Colchester area between 2009 and 2013, taking more than £1 million from older and vulnerable victims. The gang were jailed for a total of over 40 years, with the main perpetrator given a 10 year custodial sentence. The complex investigation took over 2 years to conclude.

The attendees were given information on a Scam project currently being undertaken by Trading Standards. The information included what to look at out for when visiting residents homes, for example excessive amounts of post, continuous phone calls, numerous parcels, concerns about money and residents struggling to pay bills. There have been over 2,700 victims identified in Essex.

Feedback from the presentation included "Was really good, thank you for coming. It was the most interesting presentation all day, in particular things to look out for when we go to people's homes, particular triggers/signs etc".

Following the event we have received urgent referrals from concerned Adult Social Care staff and have responded by conducting joint visits with them. The event has forged a strong partnership between Adult Social Care and Trading Standards.

We are looking to give this presentation across the county to other partners.

## **BORDER SHERIFFS**

Officers were recently on standby to attend a raid with HMRC where they raided a premise suspecting to find non duty paid products. Intelligence led them to believe that there may be goods of interest to Trading Standards such as counterfeit and unsafe electrical items. As it happened the raid took place and nothing was found of benefit to HMRC other than hundreds of wigs that the company traded in. However they did bring to our attention evidence to show the company had been supplying Hoverboards. The poor record of Hoverboards has made officers extremely interested in examining any being offered for sale and therefore we will be keeping a close eye on the company, specifically at the ports and borders used as a point of entry into the UK for such goods.

## IT'S NOT ROCKET SCIENCE...



Pyrotechnics e.g. smokes, bangs, flashes, paint and frag grenades are all classed as explosives and as such are subject to rules and regulations in relation to storage. Under 'The Explosive Regulations 2014' all explosive stores holding between 5kg and 250kg Net Explosive Content (NEC) need storage licence from their Local Authority. There is no restriction on the type of store you should have - everything from metal shipping containers, brick buildings, wooden sheds, garages and segregated areas within buildings are all permitted to

be registered stores but appropriate measures must be taken to prevent unplanned fires or explosions, limit the extent and spread of any fire or explosion and to protect people from the effects of a fire or explosion.



A routine visit to a local paintball gun, clothing and accessories business uncovered a store of smoke and flash grenades that was both unlicensed and unsafe. If storing below 5kg NEC you do not need a licence but this business had **87.1kg** NEC on the property which was being stored in open trays on shelves next to flammable paintball materials/accessories! An infringement notice was issued and the business was told to get the products re-packed into transit boxes and moved to a metal cabinet, as well as apply for a storage licence, without delay.

As the above example shows, if a business is found to be non-compliant we will, where appropriate, deal with it by offering advice and guidance and seek to rectify matters within an agreed timescale. But, whilst our overriding aim is to help businesses understand and comply with the law, we will not hesitate to investigate and where appropriate take immediate formal action against any person or business that deliberately, dishonestly, recklessly or fraudulently breaches safety laws in Essex.

## BUY WITH CONFIDENCE



The Buy With Confidence scheme operated by Essex Trading Standards continues to grow. Recent new members include MJM Data Retrieval, a business based in Cambridgeshire that can retrieve information from digital devices (including, if it's possible, those photos on the computer hard drive that you accidentally deleted). We are also working with Essex Adult Social Care to approve meal providers that can be recommended to clients to provide on-going meals on wheels services. The major reason behind this expansion of meal providers is about giving clients choice regarding who will provide them with the services that they need.

## SPOTLIGHT ON DANGEROUS IMPORTED PRODUCTS

The work of the Trading Standards “*Border Sheriffs*” at Stansted Airport’s parcel hubs continues to throw up new and interesting imported products, many of which are as unsafe as they are appealing. One of the latest consignments, headed for a well-known online marketplace, came from a tip-off from a local UK Border Force officer at the airport.

The dinky LED rechargeable floodlights, available in 10W and 20W models can provide a very bright light in a highly portable form and even comes with a 12V car charger for those camping or fishing trips. They are marketed at consumers, more so than at businesses. These rechargeable floodlights were tested due to the suspect mains charger used to charge the lithium-ion battery in each unit. The tests revealed that the poor engineering inside the 3-pin plug-in adaptor could lead to electric shock or fire. Without expert evaluation buyers would not be aware of these internal construction hazards.



These products were yet another example of the business model whereby there is no importer in the UK, just a seller in China who ships to a UK fulfilment house who for a fee warehouses and distributes the goods once the buyer clicks on “Buy”. Action has been taken to have the listings removed and any previously supplied stock recalled from consumers. The difficulty for British consumers is that other very similar looking versions of this type of product are available online, and it is difficult to know whether they are as unsafe as these rechargeable floodlights or whether they are of a higher specification.

## PUBLIC WEIGHBRIDGE OPERATORS

We recently had to certificate 4 individuals to ensure their competency to operate public weighing and measuring equipment. In this instance a weighbridge that belonged to the London Freight Terminal was required to be certified as required under Part III of the Weights and Measures Act 1985.

The duty to act as a public weighbridge operator is extremely important to:

- Ensure accurate weights are obtained, essential for the safety of people, vessels, ships, vehicles and equipment in use.
- Ensure fair and accurate calculation of payments.
- To comply with insurance policies.
- Meet legal obligations

In this instance the weighing will be to determine weights of containers to be recorded to ensure the correct loading of ocean going vessels and to prevent overloading and subsequent loss at sea. This is a requirement under the Safety of Life at Sea or SOLAS regulations as they are known.

## SCALES OF JUSTICE!



As part of Essex Trading Standards role in preventing unsafe goods entering the UK, we receive INTEL regarding items to examine on import at Stansted. On this occasion the product selected was an aquarium light made of a bank of LED's, brand name LEDGLE LED manufactured in China, which was deemed so unsafe by officers that they seized the whole consignment.

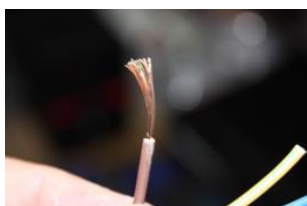
On returning to the office one was selected for expert examination, to determine if the luminaire was "safe" with regard to the Low Voltage Directive and the UK standard for plugs and sockets.



The experts report confirmed the items were seriously unsafe as it was not earthed sufficiently, it was possible to come into contact with live parts and the light was not constructed to protect it from water ingress despite its intended use. There were no instructions on how to install the light safety with only wire and metal hooks being provided. The two plug and cords sets supplied were so poorly manufactured the examiner was of the opinion they were probably counterfeit!



There were no importers details on the shipping documents only the destination address, Amazon.co.uk fulfilment centre in Bedford. Amazon UK was contacted to remove the item from sale but as the luminaire was still available on non UK hosted Amazon websites a Rapid Alert System for Non Food Consumer Products (RAPEX) was submitted to Business Innovations & Skills, BIS, to warn the authorities across Europe of these potentially lethal aquarium lights.



## A CLOSE BRUSH WITH THE LAW

We recently had an enquiry from a lady who wanted to start up a tooth whitening business. She had no experience or prior training, but she had found a company willing to instruct her for £1500...

Tooth whitening amounts to the practice of dentistry and can only be undertaken legally by those registered with the General Dental Council (GDC); specifically dentists, dental hygienists, dental therapists or clinical dental technicians. It follows that any persons holding themselves out as being prepared to perform tooth whitening whilst unregistered with the GDC may face investigations by the GDC, with a view to bringing a criminal prosecution. Tooth whitening training companies often argue that the fact they are using products which contain or release less than 0.1% hydrogen peroxide (bleach) renders their practice 'cosmetic' and legal. This is inaccurate – only GDC registrants can provide tooth whitening treatment.

Illegal tooth whitening can have public health implications in terms of the potential for damage to the structure of the teeth and gums, and in some instances even short-term risk of swallowing toxic chemicals. In this case it was fortunate that the lady sought advice before parting with her money. She is now looking into studying to become a qualified dental hygienist so that she can practice tooth whitening legally.

## **GREATER ESSEX TRAINING WEEKEND**

Greater Essex (Southend-On-Sea) will host a training weekend in September for Trading Standards Officers from around the country. The weekend will cover a range of topics such as Nutritional Food Labelling, an update of the first year of the Consumer Rights Act 2015 and an update on Product Safety. There will be discussions regarding the Internet and Social Media Investigations, including RIPA (Regulation of Investigatory Powers Act). Presentations will be given about taking cases in the Magistrates Court; Open Source Data and Investigations and a discussion led by the National Trading Standards board (NTSB) and the Association of Chief Trading Standards Officers (ACTSO).

Essex Trading Standards are extremely fortunate to have the regional Lead Officer for Safety on their staff and he will be providing the Product Safety Training at this event.

Training is vital for Trading Standards professionals and this event will provide much needed resources to Trading Standards Officers courtesy of the South East Midlands Branch of the Chartered Trading Standards Institute.

## **BUBBLE TROUBLE**



As part of Essex Trading Standards role in monitoring the safety of goods entering the UK through border points in Essex, Trading Standards Officers recently examined a mixed consignment of consumer goods imported from China, being held at a local customs clearance warehouse in Basildon.

Amongst the dog muzzles and toilet brushes, officers found 25 toy bubble machines, destined for some unlucky toddlers via a large, well known internet based retailer. Initial checks of these battery operated toys raised concerns, as they did not bear required information, including the name and address details of the manufacturer / importer, or the "CE" mark, denoting compliance with the Toy Safety Directive.

A sample of the toy, which included a bottle of "bubble liquid" was taken and submitted to a test house for safety testing, including checks on the microbiological quality of the liquid. Testing revealed that the plastic bag packaging of the toy was unsafe, posing a potential asphyxiation hazard to the intended consumer (due to its dimensions and thickness). In addition, the testing of the bubble liquid solution indicated the product also posed a potential hygiene risk, as the liquid showed elevated total bacteria counts. The Toy Safety Directive essential safety requirements requires that toys must be designed and manufactured in such a way as to meet hygiene and cleanliness requirements in order to avoid any risk of infection, sickness or contamination.

As a result of these findings, the UK agent, who took the responsible view not to market the toys until the results were known, has subsequently overseen the secure destruction of the products.

## **JUST HOW FRAUDULENT CAN YOU GET??!!**

Our officers were recently asked by another Trading Standards Authority to visit a consumer in our area and obtain a witness statement regarding a scam that he had been the victim of in respect of wall coating. When our officers visited the consumer they found the situation was much worse than first thought.

He had received a knock on the door from someone in a high visibility vest claiming that there was a problem with the drainage in the area and it had been identified as emanating from his property. The trader and a colleague showed the householder where the “blockage was and the householder agreed to having the work carried out.

He was told that he had to pay £5000 cash up front and then later was told that as the work was bigger than first thought he would need to pay an additional £9,600 into a named bank account.

The householder then remembered that he had an account with Homeserve so he phoned them and they said they would attend the next day. However, about an hour later he received a call from “Homeserve” telling him that the contract did not cover the problem and to stay with the company in attendance as they “are legitimate”.

He was also told that the blockages had caused problems with his outdoor wall coating and that this needed to be re-done. However, they could put him in touch with a company who could deal with this. He subsequently received a telephone call from this company and was told if he paid £9800 into their account they would come and re-coat his walls. This he duly did.

The next day Homeserve came round and told him that there weren't any problems with his drains and didn't require any work. He phoned the company and asked for a refund. They agreed but said because of accounting problems he would need to pay them an additional £15,000 and they would then refund him £30,000 so he would actually gain £400. He expressed his concern at this and refused to comply. However, later on he received a telephone call from the “Office of Fair Trading” telling his that this was accepted practice and that if he didn't pay the money he would find himself on the wrong end of a court order. He duly paid it.

The next day he received another call from the “Inland Revenue” saying that he had to pay an additional £7900 income tax on the money that he had already paid. At this point he realised that he was being defrauded and reported it.

Needless to say, our enquiries are continuing and if anyone is aware of a similar fraud please contact Trading Standards via the national helpline 03454 040506

Also, a timely reminder, especially to older/vulnerable relatives/friends:

- Never agree to having work carried out on your house or garden by anyone who knocks on your door offering household repairs or maintenance
- Always check out traders who leaflet as many contain false addresses and have pay as you go phone numbers which stop working as soon as you have a problem.

## Planning News

### ***Minerals and Waste Policy planning***

On Friday 10 June Essex and Southend-on-Sea Councils **submitted their Replacement Waste Local Plan** along with supporting documents to the Secretary of State for independent examination.

The Planning Inspectorate has appointed Mrs Kathleen Ellison to lead the independent examination of the submitted Plan. All enquiries relating to the Examination in Public should be made to the Programme Officer, Claire Jones-Hughes, at [bankssolutionsuk@gmail.com](mailto:bankssolutionsuk@gmail.com) or on 01273 381518 / 07737 786 425. The Programme Officer is an independent officer for the examination who reports directly to the Inspector to organise and manage the administrative and procedural matters of the examination process. If you wish to be kept informed of the timeframe for the Examination in Public, please contact Claire so that she can include you on her distribution list.

The Inspector has published the **Issues and Matters and a Programme for the examination** and these are available online at [www.essex.gov.uk/WLP](http://www.essex.gov.uk/WLP). Those who made representations to the Pre Submission Draft (March 2016) have been contacted directly by the Programme Officer.

The Hearing sessions for the examination will begin at 10am on Tuesday 27 September 2016. **Please check our website for exact hearing dates and times.** The Hearing sessions will be held at: County Hotel, Rainsford Road, Chelmsford, Essex, CM1 2PZ. Whilst the sessions are public, space at the venue is limited and therefore you should contact the Programme Officer if you wish to attend to observe the proceedings.

You can view the examination documents at the following locations:

- Online at [www.essex.gov.uk/WLP](http://www.essex.gov.uk/WLP) and [www.southend.gov.uk/wastelocalplan](http://www.southend.gov.uk/wastelocalplan);
- At County Hall, Chelmsford from Monday to Friday between 9am and 5pm by appointment via [mineralsandwastepolicy@essex.gov.uk](mailto:mineralsandwastepolicy@essex.gov.uk) or 03330 139 808;
- At the Civic Centre, Southend from Monday to Friday between 9am and 5pm by appointment via [debeeskiner@southend.gov.uk](mailto:debeeskiner@southend.gov.uk) or 01702 215408.

If you have any queries relating to the Replacement Waste Local Plan in general, please contact us on 03330 139 808 or via [mineralsandwastepolicy@essex.gov.uk](mailto:mineralsandwastepolicy@essex.gov.uk)

## Flood and Water Management

Essex County Council has initiated a **Property Level Protection grant scheme** which is available to all residents in Essex (excluding Thurrock and Southend). The recipients of the grants will be residential homeowners who have been flooded internally in the past from ordinary watercourse/groundwater/surface water flooding, can provide evidence of the impact of the flooding event and have not had the opportunity of applying for the Repair and Renew grants or would not be included in any flood alleviation scheme to be undertaken by any Risk Management Authority in Essex. By delivering this £5,000 per property grant, our plan in the long term is to provide assistance to flooded residents in Essex by helping them become more resilient and resistant to future flooding by providing them with Property Level Protection as well as promoting community-wide flood risk awareness.

Prospective applicants can visit:

<http://www.essex.gov.uk/Environment%20Planning/Environment/local-environment/flooding/Grants/Pages/Property-Level-Protection.aspx> or call 0844 798 1261 to register their interest.

We hope that this news has been useful and interesting to you all. We value your feedback and so if you have any comments or suggestions for future topics you would like to see covered in *Making the Links*, please let us know either via Angela Balcombe, the Parish Information and Co-ordination Officer, or direct to the address below:

Rebecca Rushmer  
Service Development Officer  
Minerals and Waste Planning, ECC  
County Hall, Chelmsford  
CM1 1QH

Tel: 0333 013 6818  
Email: [rebecca.rushmer@essex.gov.uk](mailto:rebecca.rushmer@essex.gov.uk)

- For queries relating to Minerals & Waste Policy and the Minerals & Waste Development Documents, please contact our helpline - 03330 139 808 or email [mineralsandwastepolicy@essex.gov.uk](mailto:mineralsandwastepolicy@essex.gov.uk). For queries relating to planning applications and enforcement, contact the Helpline or email [mineralsandwastedm@essex.gov.uk](mailto:mineralsandwastedm@essex.gov.uk).
- For queries relating to flood and SuDs issues please email [floods@essex.gov.uk](mailto:floods@essex.gov.uk)
- To find out more about procedures for attending D&R Committee go to [www.essex.gov.uk/planning](http://www.essex.gov.uk/planning) then follow *Minerals and Waste Planning Team>Planning Applications>The Planning Process>Decision Making*.



For full application details visit [www.essex.gov.uk/viewplanning](http://www.essex.gov.uk/viewplanning), click on 'Search for a Planning Application' then search for an application using the application reference, the application date, location or proposal

### Pending Minerals and Waste Applications as of 15 August 2016

<u>Area description</u>	<u>Application number</u>	<u>Location</u>	<u>Application type</u>	<u>Validation date</u>	<u>Full development description</u>
Basildon	ESS/49/14/BAS	Pitsea Landfill, Pitsea Hall Lane, Pitsea, Basildon, SS16 4UH	Full App with EIA ESS	27/11/14	Continuation of installation of waste pre-treatment facilities and recontouring of the landfill to facilitate restoration permitted by ESS/35/06/BAS without compliance with condition 4 (completion timescales), to allow waste to be deposited on site until 31 December 2025 and the site restored to nature conservation by 31 December 2027 and without compliance with condition 3 (waste geographical sources) to allow importation of waste from outside Essex and Southend and also without the development of the previously permitted waste pre-treatment facility.
Braintree	ESS/07/16/BTE	Bradwell Quarry, Church Road, Bradwell CM77 8EP	Full Planning Applications ESS	26/01/16	Continuation of development permitted by ESS/24/14/BTE without compliance with conditions 2 (application details), 7 (timescales), 38 (sequence of restoration) and 59 (no importation of mineral for processing) to allow amended restoration levels, revised phasing and additional time to complete extraction and restoration until 2021, utilisation of overburden in restoration and processing of mineral both arising from the Integrated Waste Management Facility (if implemented). Planning permission ESS/24/14/BTE being for Extraction of an estimated reserve of 3 million tonnes of sand and gravel (from Sites A3 and A4 as identified Minerals Local Plan) and retention of existing access onto the A120, private haul road, sand and gravel processing plant, ready mixed concrete plant, bagging plant, dry

					<p>silo mortar plant and water management system, internal haul roads and re-contouring of restoration levels of extraction areas (Sites R and A2) with restoration to a combination of agriculture, woodland, biodiversity, water lagoons and to levels appropriate to safeguard implementation of planning permission ESS/37/08/BTE (Integrated Waste Management Facility).</p>
Braintree	ESS/04/15/BTE	Halstead Anaerobic Digestion Facility, Land North of Bluebridge Industrial Estate, Halstead	Removal/ Variation of Condition ESS	22/01/15	Continuation of development of an anaerobic digestion plant without compliance with Conditions 1 (compliance with submitted details), 4 (hours of operation) and 19 (external materials, finishes and colours) attached to permission ref ESS/28/13/BTE, to allow an extension of operating hours to between 12:00 hours and 16:30 hours on no more than 8 Saturdays following a bank/public holiday per annum and to remove external cladding on the Engine Building (part retrospective).
Braintree	ESS/28/16/BTE	Land at Essex County Council waste transfer station, Cordons Farm, Long Green, Cressing, CM77 8DL	Removal/ Variation of Condition ESS	21/06/16	Variation of conditions 11 and 12 (noise monitoring) of planning permission ESS/23/13/BTE, to amend the wording of the noise monitoring condition.
Chelmsford	ESS/08/16/CHL	Sandon Quarry, Southend Road, Sandon, Howe Green, CM2 7TE	Full App with EIA ESS	12/02/16	Northern quarry void and plant site including the restoration of the Northern quarry void using inert materials to agriculture and nature conservation interest with new public rights of way, the installation and operation of an inert waste recycling facility in the plant site for the production of secondary aggregate followed by the restoration of the plant site to nature conservation interest and the creation of an area of biodiversity compensation habitat.

Chelmsford	ESS/05/15/CHL	Roxwell Quarry Complex, Boyton Cross, Roxwell, Chelmsford CM1 4LT	Full Planning Applications ESS	23/02/15	Modification to the restoration profile and the restoration scheme for the non-hazardous landfill arising from overtipping of approx. 85,250 cubic metres (part retrospective). Enhanced restoration of a former landfilling area by the importation of inert materials and biosolids to enable agricultural after-use and restoration scheme for the former mineral processing plant site to woodland, nature conservation and agricultural after-uses (including retention of hardstanding and workshop). All to be completed by 31 December 2015.
Chelmsford	ESS/36/13/CHL	Hanson Aggregates, Bulls Lodge Quarry, Generals Lane, Boreham, Chelmsford CM3 3HR	Removal/ Variation of Condition ESS	09/07/13	Continuation of winning and working of sand and gravel, the erection of a processing plant and ready mixed concrete and mortar plants, workshop and weighbridge office (permitted by planning permission ref. CHL/1890/87) without compliance with condition 17 (hours of operation) to allow additional hours of operation for the processing plant from 0600 to 0700 and 1800 to 2200 hours Mondays to Fridays for a period of 5 years.
Chelmsford	ESS/37/15/CHL	Bulls Lodge Quarry (Boreham Airfield), Generals Lane, Boreham, Chelmsford CM3 3HR	Removal/ Variation of Condition ESS	11/08/15	Continuation of winning and working of sand and gravel as permitted by CHL/1019/87 without compliance with condition 1 (application details), Condition 4 (working and reclamation schemes) and condition 6 (restoration Master Plan) to allow amended restoration levels and amended restoration Masterplan.
Chelmsford	ESS/25/16/CHL	Land at ECC waste transfer station, Winsford Way, Chelmsford, CM2 5AA	Removal/ Variation of Condition ESS	21/06/16	Variation of condition 6 (noise monitoring) of planning permission ESS/31/13/CHL, to amend the wording of the noise monitoring condition.

Colchester	ESS/06/15/COL	Colchester Quarry (Bellhouse), Warren Lane, Colchester	Full Planning Applications ESS	11/06/15	Retrospective application for continuation of use of the restored Abbotstone North Landfill Site without compliance with Conditions 2 (Development Details), 3 (Reinstatement Details), 12 (Landscaping Scheme Design), 19 (AoD Levels), and 22 (Aftercare Scheme) attached to planning permission ESS/07/01/COL/REV to allow the retention of amended contours within the Abbotstone North landfill site, along the boundary with the ECC closed landfill and with Public Footpath 15.
Colchester	ESS/29/16/COL	Greenacres, Packards Lane, Wormingford, Colchester CO6 3AH	Removal/ Variation of Condition ESS	08/07/16	Timber recycling compound.
Harlow	ESS/26/16/HLW	Land at Essex County Council waste transfer station, West Road, Harlow, CM20 2AL	Removal/Variation of Condition ESS	21/06/16	Variation of condition 14 (noise monitoring) of planning permission ESS/38/11/HLW, to amend the wording of the noise monitoring condition.
Maldon	ESS/14/16/MAL	Land at Bradwell Power Station, Bradwell on Sea, Southminster CM0 7HQ	Full Planning Applications ESS	01/04/16	The importation of packaged intermediate level waste from Magnox sites Sizewell "A" and Dungeness "A" to Bradwell site and the interim storage within the existing interim storage facility.
Maldon	ESS/15/16/MAL	Land at Bradwell Power Station, Bradwell on Sea,	Removal/ Variation of Condition	01/04/16	To vary condition 3 (restriction on importation) of planning permission ESS/43/12/MAL to temporarily suspend condition 3 to allow the importation of packaged intermediate level waste from Magnox sites

		Southminster, CM0 7HQ	ESS		Sizewell "A" and Dungeness "A" into the Bradwell sites existing interim storage facility for the period up to 2023.
Tendring	ESS/24/15/TEN	Elmstead Hall, Elmstead, Colchester	Full App with EIA ESS	02/06/15	Construction of an irrigation reservoir involving the excavation, processing and removal of sand, gravel and soils, engineering works and ancillary buildings.
Tendring	ESS/30/16/TEN	Martells Quarry, Slough Lane, Ardleigh CO7 7RU	Full App with EIA ESS	11/07/16	Application for the continued restoration of former quarry void by means of landfill.
Tendring	ESS/27/16/TEN	Land at Veolia waste transfer station, Colchester Eastern Bypass, Ardleigh CO7 7SL	Removal/ Variation of Condition ESS	21/06/16	Variation of condition 5 (noise monitoring) of planning permission ESS/16/13/TEN, to amend the wording of the noise monitoring condition.

#### Pending County Council Applications as of 15 August 2016

<u>Area description</u>	<u>Application number</u>	<u>Location</u>	<u>Application type</u>	<u>Validation date</u>	<u>Full development description</u>
Basildon	CC/BAS/37/16	Ghyllgrove County Junior School, The Gore, Basildon, SS14 2BG	Full Planning Application CC	20/07/16	The construction of a 2 storey extension to provide 7no. classbases and ancillary facilities to allow the expansion of the schools from 2FE to 3FE. The provision of 4no. additional car parking spaces and 42no. additional cycle parking spaces. The provision of a new MUGA pitch.

Basildon	CC/BAS/40/16	Whitmore County Infant and Junior School, Whitmore Way, Basildon, SS14 2TP	Removal/ Variation of Condition CC	02/08/16	The continued construction and use of a single storey 4 classbase and studio hall extension to the south west of the existing junior school buildings, the remodelling of an existing classbase and the construction and use of a single storey class base extension to the east of the existing infant school buildings, together with amended parking layout and a temporary construction access off Whitmore Way, to allow for the expansion of the school from the existing 525 pupils to a maximum capacity of 630 pupils without compliance with Condition 2 (application details) attached to planning permission CC/BAS/54/15 to allow high level windows to be introduced to the rear wall of the studio, amendments to roof lights, the north elevation corrected to brickwork, reduced glazing height and the provision of additional roof lights in the clerestorey roof.
Braintree	CC/BTE/17/14	Braintree Road, Shalford CM7 5HQ	Full App (Major) CC	10/03/14	Restoration of the former Shalford Recycling Centre for Household Waste to amenity parkland. Proposed development includes the demolition of the existing hardstanding area; the formation of a pond; the re-contouring of land levels; modifications to the existing access; and the creation of a car parking area.
Braintree	CC/BTE/41/16	Edith Borthwick School, Springwood Drive, Braintree, CM7 2YN	Removal/ Variation of Condition CC	04/08/16	The continuation of development for the permanent provision of a double modular classbase building and 9 car park bays without compliance with condition 5 (size of car parking bays) attached to planning permission CC/BTE/16/16 to allow reduced car parking bay sizes (2.5 x 5m) to facilitate 9 car parking bays.
Brentwood	CC/BRW/35/16	St Peters Church of England Primary School, Wigley Bush	Full Planning Application CC	08/07/16	The installation of a new single classroom extension for a period of 7 years until September 2023.

		Lane, South Weald CM14 5QN			
Colchester	CC/COL/36/16	St Michaels County Primary School, Camulodunum Way, Colchester, CO2 9RA	Full Planning Application CC	04/07/16	The provision of a single classbase unit for the duration of 7 years until September 2023.
Colchester	CC/COL/30/16	Lexden Springs School, Halstead Road, Colchester, CO3 9AB	Removal/ Variation of Condition CC	28/06/16	The continued use of six temporary classbases for a temporary period until 31 August 2021 without compliance with condition 2 (time limit) attached to planning permission CC/COL/33/11.
Uttlesford	CC/UTT/39/16	Flich Green Academy, Tanton Road, Flich Green, Dunmow, CM6 3GG	Full Planning Application CC	20/07/16	The construction of a single storey extension to provide 3no. classbases and ancillary facilities to allow the expansion of the school from 1FE to 1.5FE. The provision of 8 new car parking spaces and 40 new cycle and scooter parking spaces. The provision of a new MUGA pitch.

**Decision on Minerals, Waste and County Council Applications made between 15 July 2016 – 15 August 2016**

<u>Area description</u>	<u>Application number</u>	<u>Location</u>	<u>Full development description</u>	<u>Decision date</u>	<u>Decision description</u>	<u>Decision level</u>
Braintree	CC/BTE/25/16	Shalford Primary School, Church End, Shalford, CM7 5EZ	The retention of a classbase for a temporary period until 31 August 2021 without compliance with Condition 2 (time limit) attached to planning permission CC/BTE/37/11 at Shalford Primary School, Church End, Shalford, Essex CM7 5EZ.	27/07/16	Granted	Delegated
Castle Point	ESS/17/16/CPT	Canvey Island WRC, Thames Road, Canvey Island, SS8 0HR	Retrospective Planning Application for the Erection of a Glass Reinforced Kiosk to house electrical control equipment.	18/07/16	Granted	Delegated
Chelmsford	CC/CHL/31/16	Boreham Primary School, Juniper Road, Boreham, Chelmsford CM3 3DB	The continued use of a single classbase with toilets for a temporary period until 31 August 2021 without compliance with condition 3 (time limit) attached to planning permission CC/CHL/40/09.	03/08/16	Granted	Delegated
Colchester	CC/COL/27/16	Stanway Primary School, Villa Road, Stanway, Colchester CO3 0RH	Proposed erection of a two classroom modular building for a temporary two year period.	08/08/16	Granted	Delegated



Colchester	CC/COL/28/16	Holy Trinity C Of E Primary School, Fiddlers Folly, Fordham Heath, Colchester CO3 9UE	Continuing use of classbase for a temporary period until 31 August 2021 without compliance with Condition 2 (time limit) attached to planning permission CC/COL/43/11.	09/08/16	Granted	Delegated
Colchester	ESS/21/16/COL	Colchester Skip Hire, Greenacres, Packards Lane, Wormingford, Colchester CO6 3AH	A variation of condition 4 (receipt and handling of materials) and 23 (programme to address external waste processing and housing as well as northern boundary treatment) of planning permission ESS/13/11/COL-appeal, to accommodate dry storage of recycled materials within designated areas and for the retrospective approval of the northern containment walls.	26/07/16	Granted	Committee
Epping Forest	CC/EPF/34/16	Limes Farm Junior School, Limes Avenue, Chigwell, IG7 5LP	Continued use of a temporary classbase unit until 31 August 2021 without compliance with condition 2 (time limit) attached to planning permission CC/EPF/31/11.	10/08/16	Granted	Delegated
Epping Forest	CC/EPF/29/16	Dr Walker CofE Primary School, Ongar, CM5 0RG	The continued use of two classrooms for a temporary period until 31 August 2021 without compliance with Condition 2 (time limit) attached to planning permission CC/EPF/36/11.	11/08/16	Granted	Delegated
Harlow	CC/HLW/32/16	Church Langley Primary School, Harlow, CM17 9TH	The continued use of a double temporary classbase for a temporary period until 31st August 2021 without compliance with condition 2 (time limit) attached to planning permission CC/HLW/35/11.	15/08/16	Granted	Delegated

Harlow	CC/HLW/33/16	Church Langley Primary School, Harlow, CM17 9TH	The continued use of a single relocatable classbase with toilets for a temporary period until 31st August 2021 without compliance with condition 2 (time limit) attached to planning permission CC/HLW/63/09.	15/08/16	Granted	Delegated
Maldon	ESS/20/16/MAL	Asheldham Quarry, Southminster Road, Asheldham, CM0 7DZ	Proposed concrete batching plant and ancillary development.	12/08/16	Refused	Delegated
Maldon	ESS/05/16/MAL	Cobbs Farm, Maldon Road, Goldhanger, Maldon, CM9 8BQ	Continuation of the construction of an agricultural reservoir by the extraction and removal from the site of sand, gravel and surplus soils without compliance with Condition No. 2 and No. 27 attached to planning reference ESS/34/14/MAL to allow an amended restoration layout incorporating an island and amended eastern boundary of the reservoir.	21/07/16	Granted	Delegated
Maldon	ESS/06/16/MAL	Cobbs Farm, Maldon Road, Goldhanger, Maldon, CM9 8BQ	Continuation of the construction of an agricultural reservoir by the extraction and removal from the site of sand, gravel and surplus soils without compliance with Condition No. 2 and No. 27 attached to planning reference ESS/35/14/MAL to allow an amended restoration layout incorporating an island and amended eastern boundary of the reservoir.	21/07/16	Granted	Delegated

Tendring	CC/TEN/26/16	Frobisher Primary School, Frobisher Drive, Jaywick, Clacton-on-sea, CO152QH	The retention of 2 classbases for a temporary period until 31 August 2021 without compliance with Condition 2 (time limit) attached to planning permission CC/TEN/45/11.	27/07/16	Granted	Delegated
Uttlesford	CC/UTT/22/16	The Peter Kirk Education Centre, St. Johns Road, Stansted, CM248JP	Demolition of HORSIA style building.	21/07/16	Granted	Delegated
Uttlesford	CC/UTT/38/16	St Marys C of E School (incl Caretakers Hse) & the, St Johns Road, Stansted, CM24 8JP	Application for Prior Notification of Proposed Demolition at the former St Mary's CofE Primary School (including caretaker's house), St John's Road, Stansted Mountfitchet, Essex CM24 8JP.	22/07/16	Granted	Delegated